



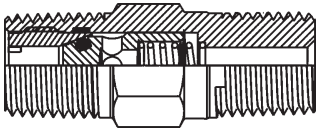
SAGANA INSTRUMENTATION



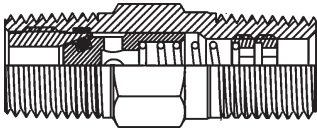
**CLAPETS ANTI-RETOUR
CHECK VALVES
RÜCKSCHLAGVENTILE**

| | |
|--|---|
| Description - Description - Beschreibung | 4 |
| Spécifications - Specifications - Spezifikationen | 5 |
| Différences visuelles - Visual differences - Unterscheidungsmerkmale | 6 |
| Connexions disponibles - Available connections - Verfügbare Anschlüsse | 7 |

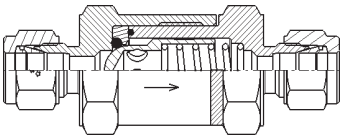
| | |
|---|---|
| C1 - Clapet anti-retour - Check valve - Rückschlagventil | 8 |
|---|---|



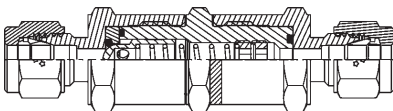
| | |
|---|----|
| C2 - Clapet anti-retour réglable - Adjustable check valve - Regulierbares Rückschlagventil | 10 |
|---|----|



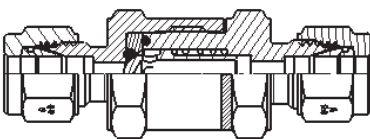
| | |
|---|----|
| C3 - Clapet anti-retour - Check valve - Rückschlagventil | 12 |
|---|----|



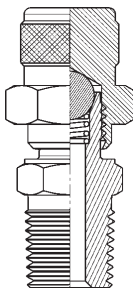
| | |
|---|----|
| C4 - Clapet anti-retour réglable - Adjustable check valve - Regulierbares Rückschlagventil | 17 |
|---|----|



| | |
|--|----|
| AT300 - Clapet anti-retour - Check valve - Rückschlagventil | 20 |
|--|----|



| | |
|---|----|
| PG - Purge manuelle - Manual Purge - Entlüftungsventil | 24 |
|---|----|



| | |
|--|----|
| Données techniques - Technical data - Technische Daten | 27 |
|--|----|

| | | | | |
|--------------|--|--|--|-----------|
| C1 | <p>Acier inoxydable 316L et laiton Pression de service max: 200 bar. Corps une pièce (compacte) Pression d'ouverture jusqu'à 50 psi Seulement avec raccord NPT.</p> | <p>SS 316L & Brass Working pressure up to 200 bar. One size body (compact) Cracking pressure up to 50 psi. NPT connections only.</p> | <p>Edelstahl 316L und Messing Max. Betriebsdruck 200 Bar Körper aus einem Stück gefertigt (kompakt) Öffnungsdruck bis 50 psi Nur mit NPT-Verbindungselement</p> | 8 |
| C2 | <p>Acier inoxydable 316L et laiton Pression de service max: 200 bar. Corps une pièce (compacte) Pression d'ouverture réglable jusqu'à 350 psi. Seulement avec raccord NPT.</p> | <p>Brass & SS 316L Working pressure up to 200 bar. One size body (compact) Adjustable cracking pressure up to 350 psi NPT connections only</p> | <p>Edelstahl 316L und Messing Max. Betriebsdruck 200 Bar Körper aus einem Stück gefertigt (kompakt) Öffnungsdruck bis 350 psi einstellbar Nur mit NPT-Verbindungselement</p> | 10 |
| C3 | <p>Acier inoxydable 316L et laiton Pression de service max: 300 bar. Pression différentielle max: 200 bar. Pression d'ouverture jusqu'à 100 psi. Large choix de raccords.</p> | <p>Brass & SS 316L Working pressure up to 300 bar. Maximale differential pressure: 200 bar. Cracking pressure up to 100 psi. Large choice of end connections.</p> | <p>Edelstahl 316L und Messing Max. Betriebsdruck 300 Bar Max. Differenzdruck 200 Bar Öffnungsdruck bis 100 psi Große Auswahl an Verbindungselementen</p> | 12 |
| C4 | <p>Acier inoxydable 316L et laiton Pression de service max: 300 bar. Pression différentielle max: 200 bar. Pression d'ouverture réglable jusqu'à 350 psi. Large choix de raccords.</p> | <p>Brass & SS 316L Working pressure up to 300 bar. Maximale differential pressure: 200 bar. Adjustable cracking pressure up to 350 psi. Large choice of end connections.</p> | <p>Edelstahl 316L und Messing Max. Betriebsdruck 300 Bar Max. Differenzdruck 200 Bar Öffnungsdruck bis 350 psi einstellbar Große Auswahl an Verbindungselementen</p> | 17 |
| AT300 | <p>Acier inoxydable 316L Pression de service max: 300 bar. Pression différentielle max: 300 bar. Pression d'ouverture jusqu'à 100 psi. Large choix de raccords.</p> | <p>SS 316L Working pressure up to 300 bar. Maximale differential pressure: 300 bar. Cracking pressure up to 100 psi. Large choice of end connections.</p> | <p>Edelstahl 316L Max. Betriebsdruck 300 Bar Max. Differenzdruck 300 Bar Öffnungsdruck bis 100 psi Große Auswahl an Verbindungselementen</p> | 20 |

DESCRIPTION

Applications

Les clapets anti-retour SAGANA® permettent un contrôle unidirectionnel des liquides et des gaz. Ils sont utilisés dans des domaines variés tels que l'industrie, la pétrochimie, l'instrumentation, la recherche.

Caractéristiques

Les clapets anti-retour SAGANA® sont disponibles avec différents tarrages de ressorts:
Ressort fixe tarré pour une pression choisie.
Ressort à tarrage réglable.

Matériaux

Corps, clapet, écrou et bague en inox ou laiton (autres matières sur demande).
Joints toriques en VITON® (FPM) en standard (autres matières sur demande).
Ressort en acier inoxydable 302.
Joints toriques: FPM, NBR, EPDM, (PTFE)

Essais

Tous les clapets anti-retour sont testés à 100%.



ATTENTION

Respecter le sens d'écoulement du gaz indiqué par la flèche sur le corps du clapet.
Raccorder la tuyauterie amont et aval en veillant bien à la propreté des raccords.
Respecter les pressions maximales de service (PN).
Ne pas dévisser les raccords sous pression.

Viton®: marque déposée de Dupont

DESCRIPTION

Applications

SAGANA® check valves allow unidirectional control of liquids and gases. They are used in varied fields such as industry, petrochemicals, instrumentation and research.

Characteristics

SAGANA® check valves are available with different springs settings:
Fixed spring setting for a selected pressure.
Adjustable spring setting.

Materials

Body, valve, nut and ferrules in stainless steel or brass (other materials on request).
O-rings in VITON® (FPM) as standard (other materials on request).
Springs in Stainless Steel 302.
O-rings: FPM, NBR, EPDM, (PTFE)

Tests

All check valves are 100% leak tested.



CAUTION

Comply with the gas flow direction indicated by the arrow on the valve body.
Connect the upstream and downstream pipes taking care to ensure the cleanliness of the connectors.
Comply with the maximum service pressures (PN)
Do not loosen the connectors under pressure.

Viton®: is a Trade Mark of Dupont

BESCHREIBUNG

Einsatzbereiche

Die SAGANA® Rückschlagventile ermöglichen eine unidirektionelle Steuerung von Flüssigkeiten und Gasen.
Sie werden aus Sicherheitsgründen in vielfältigsten Bereichen eingesetzt, z.B. in der Industrie, der Petrochemie, der Instrumentierung und der Forschung.

Eigenschaften

Die SAGANA® Rückschlagventile sind mit verschiedenen Federstärken lieferbar:
Feste Feder, auf einen bestimmten Druck eingestellt.
Feder mit regulierbarer Stärke.

Werkstoffe

Ventilkörper, Mutter und Ring aus Edelstahl oder Messing (andere Werkstoffe auf Anfrage)
O-Ring-Dichtungen serienmäßig aus VITON® (FPM) (andere Werkstoffe auf Anfrage)
Feder aus Edelstahl 302.
O-Ring-Dichtungen: FPM, NBR, EPDM, (PTFE)

Test

Sämtliche Ventile werden zu 100% getestet.



VORSICHT

Beachten Sie die Durchflussrichtung des Gases, die durch den Pfeil auf dem Ventilkörper gekennzeichnet wird.
Schließen Sie die Rohre oberhalb und unterhalb des Ventils an, und achten Sie dabei sorgfältig auf die Sauberkeit der Verbindungen.

Viton®: Trade Mark von Dupont

SPECIFICATIONS
SPECIFICATIONS
SPEZIFIKATIONEN
Normes
Norms
Normen
Matériaux
Material
Werkstoffe

| | Pièces décolletées turn parts Drehteile |
|-----------------------------|---|
| Laiton | AFNOR CuZn40Pb3 ASTM B16 C36000 BS2874 CZ121 DIN 2.0401 EN 12164 CW614N |
| Brass | |
| Messing | |
| Acier Inoxydable | AFNOR Z6CND 17-12 AS ME S A479-316 BS 970 316-S 31 DIN 1.4404 E N 10088-1 |
| Stainless Steel | |
| Edelstahl | |

Caractéristiques
Characteristics
Eigenschaften

| | Dimensions - Dimensions - Maße |
|------------|---|
| mm : | 3mm - 4mm - 6mm - 8mm - 10mm - 12mm - 14mm - 16mm - 18mm - 20mm - 22mm - 25 mm - ... |
| inch : | 1/8" - 3/16" - 1/4" - 5/16" - 3/8" - 1/2" - 5/8" - 3/4" - 1" - ... |
| | Filets - Thread - Gewinde |
| Conical : | NPT (Briggs) - BSPT (Whitworth tapered) - ... |
| Parallel : | BSPP (Whitworth cylindrical) - NPSM - UN - SAE - ... |
| | Matière - Material - Werkstoffe |
| Standard : | Laiton - Acier inoxydable (AISI 316L), Brass - Stainless steel (316L), Messing - Edelsthal (316L) |
| Others : | Acier carbone - Carbon steel - Karbonat Edelsthal, Hastelloy® |
| | Options - Options - Optionen |
| | - Nickelé - Nickel plated - Vernickelt |
| | - dégraissé pour application oxygène - degreased for oxygen - entfettet für Sauerstoffanwendung |
| | - ... |

Différences visuelles entre métrique / fractionnel

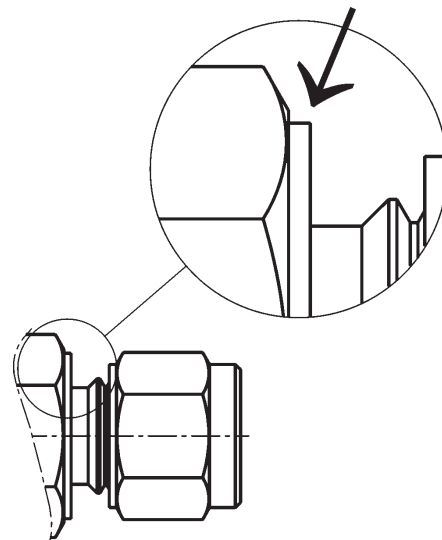
Les clapets anti-retour avec raccords à double bague pour tubes métriques sont livrés avec épaulements.

Visual differences between metric / inch

Check-valves manufactured with tube fittings for metric tubes are provided with shoulders.

Unterscheidungsmerkmale zwischen Metrisch / Zoll

Rückschlagventil für metrische Abmessungen sind mit Bund gefertigt.



Différences visuelles entre filetage NPT / BSPT

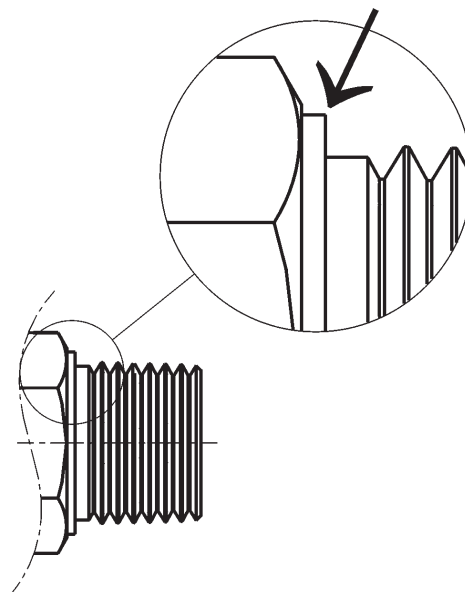
Les clapets anti-retour avec filetage BSPT (mâle ou femelle) sont livrés avec épaulements

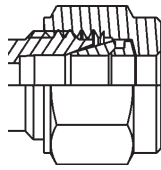
Visual differences between NPT / BSPT

Check-valves manufactured with BSPT thread are provided with shoulders

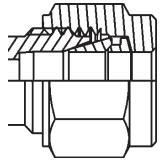
Optische Unterscheidung zwischen NPT / BSPT

Rückschlagventil für BSPT Gewinde sind mit Bund gefertigt

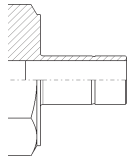




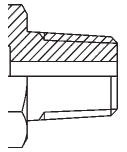
| Sagana® Tube fittings | | | | | | |
|-----------------------|------|------|------|------|------|-----|
| Dim. | 1/8" | 1/4" | 3/8" | 1/2" | 3/4" | 1" |
| Ref. | 2S | 4S | 6S | 8S | 12S | 16S |



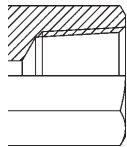
| Sagana® Tube fittings | | | | | | | | |
|-----------------------|-----|-----|-----|------|------|------|------|------|
| Dim. | 3mm | 6mm | 8mm | 10mm | 12mm | 20mm | 22mm | 25mm |
| Ref. | M3S | M6S | M8S | M10S | M12S | M20S | M22S | M25S |



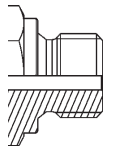
| Sagana® Tube adapter | | | | | | |
|----------------------|------|------|------|------|-----|-----|
| Dim. | 1/8" | 1/4" | 3/8" | 1/2" | 1" | |
| Ref. | 2A | 4A | 6A | 8A | 12A | 16A |



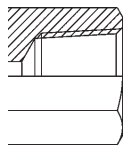
| Male NPT | | | | | | |
|----------|------|------|------|------|-----|-----|
| Dim. | 1/8" | 1/4" | 3/8" | 1/2" | 1" | |
| Ref. | 2M | 4M | 6M | 8M | 12M | 16M |



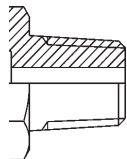
| Femelle NPT | | | | | | |
|-------------|------|------|------|------|-----|-----|
| Dim. | 1/8" | 1/4" | 3/8" | 1/2" | 1" | |
| Ref. | 2F | 4F | 6F | 8F | 12F | 16F |



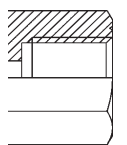
| Male BSPP (RS) | | | | | | |
|----------------|------|------|------|------|------|------|
| Dim. | 1/8" | 1/4" | 3/8" | 1/2" | 1" | |
| Ref. | 2MP | 4MP | 6MP | 8MP | 12MP | 16MP |



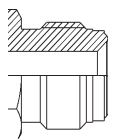
| Femelle BSPP | | | | | | |
|--------------|------|------|------|------|------|------|
| Dim. | 1/8" | 1/4" | 3/8" | 1/2" | 1" | |
| Ref. | 2FP | 4FP | 6FP | 8FP | 12FP | 16FP |



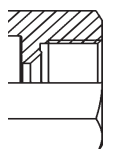
| Male BSPT | | | | | | |
|-----------|------|------|------|------|------|------|
| Dim. | 1/8" | 1/4" | 3/8" | 1/2" | 1" | |
| Ref. | 2MT | 4MT | 6MT | 8MT | 12MT | 16MT |



| Female BSPT | | | | | | |
|-------------|------|------|------|------|------|------|
| Dim. | 1/8" | 1/4" | 3/8" | 1/2" | 1" | |
| Ref. | 2FT | 4FT | 6FT | 8FT | 12FT | 16FT |



| Male Gazel® (Face seal) | | | | |
|-------------------------|------|--------------|------|-----|
| Dim. | 1/4" | 3/8" or 1/2" | 3/4" | 1" |
| Ref. | 4V | 8V | 12V | 16V |



| Female Gazel® (Face seal) | | | | |
|---------------------------|------|--------------|------|------|
| Dim. | 1/4" | 3/8" or 1/2" | 3/4" | 1" |
| Ref. | 4FV | 8FV | 12FV | 16FV |

SERIES C1 - ONE PIECE -

DESCRIPTION

Les clapets anti-retour série «C1» ont un encombrement limité grâce à un corps usiné en une seule pièce. Le clapet «C1» est disponible seulement avec des raccords NPT. La pression maximale d'utilisation est de 200 bar. Différentes pressions d'ouverture sont disponibles.

DESCRIPTION

Series «C1» check valves have small volumes with use of a one piece machined body. Check valve «C1» is available only with NPT connectors. The maximum operating pressure is 200 bar. Different cracking pressures are available.

BESCHREIBUNG

Die Rückschlagventile der Baureihe «C1» weisen dank ihres aus einem Stück gearbeiteten Korpus einen geringen Raumbedarf auf. Das Ventil «C1» ist ausschließlich mit NPT-Verbindungen lieferbar. Der maximale Einsatzdruck beträgt 200 bar. Es sind verschiedene Öffnungsdrücke lieferbar.

INFORMATIONS TECHNIQUES

TECHNICAL DATA

TECHNISCHE DATEN

| | Acier Inoxydable Stainless steel Edelstahl | Laiton Brass Messing |
|---|--|----------------------------|
| Pression de service max. Maximum working pressure Max Betriebsdruck | 200 bar (2900 psi) | |
| Pression inverse max. Maximum back pressure Max. Gegendruck | 200 bar (2900 psi) | |
| Température de service Temperature range Betriebstemperaturen | Voir le tableau "matière du joint" See the "Seal material" table Siehe die Tabelle "O-Ringwerkstoff" | |
| Pression d'ouverture Cracking pressure (psi) öffnungsdruck | 1/3, 1, 3, 5, 10, 25, 40, 50 | |

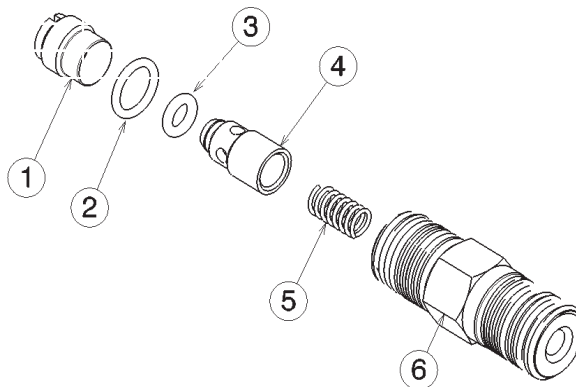
| Matière du joint Seal Material O-Ringwerkstoff | Ref. | Température de service Temperature rating Betriebstemperaturen |
|--|------|--|
| FPM (fluorocarbon Rubber) | FPM | -25°C to 200°C -13°F to 392°F |
| NBR Nitrile | NBR | -30°C to 120°C -22°F to 248°F |
| EPDM (ethylene Propylene Rubber) | EPDM | -50°C to 135°C -58°F to 275°F |
| PTFE* (Teflon) | PTFE | -40°C to 180°C -40°F to 356°F |

*PTFE will not guaranty the tightness except when high back pressure is applied.
*PTFE ne garantit l'étanchéité qu'avec une contre-pression importante.
*PTFE garantiert die Dichtheit nur bei Hochdruck.

NOMENCLATURE

PART LIST

NOMENKLATUR



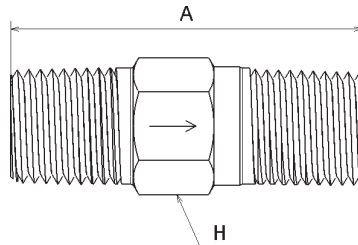
| Item | Désignation | Designation | Beschreibung | Matière Material Werkstoff | |
|------|----------------------|---------------|---------------|----------------------------------|-------|
| 1 | Siège | Seat | Sitz | AISI 316L | Brass |
| 2 | Joint torique | O-ring | O-ring | See table | / |
| 3 | Joint torique clapet | Poppet O-ring | O-ring Klappe | See table | / |
| 4 | Clapet | Poppet | Klappe | AISI 316L | Brass |
| 5 | Ressort | Spring | Feder | 302 | 302 |
| 6 | Corps | Body | Gehäuse | AISI 316L | Brass |

SERIES C1 - ONE PIECE -

DIMENSIONS

DIMENSIONS

ABMESSUNGEN



| Part Number | Inlet - Outlet | | A | | H | |
|---------------------|-----------------|-----------------|----|------|----|------|
| | Inlet | Outlet | mm | inch | mm | inch |
| 4M - C1-* | 1/4" Male NPT | 1/4" Male NPT | 41 | 1.61 | 14 | 0.55 |
| 4F - C1-* | 1/4" Female NPT | 1/4" Female NPT | 47 | 1.85 | 19 | 0.75 |
| 4M 4F - C1-* | 1/4" Male NPT | 1/4" Female NPT | 44 | 1.73 | 19 | 0.75 |
| 4F 4M - C1-* | 1/4" Female NPT | 1/4" Male NPT | 44 | 1.73 | 19 | 0.75 |
| 8M - C1-* | 1/2" Male NPT | 1/2" Male NPT | 65 | 2.56 | 22 | 0.87 |
| 8F - C1-* | 1/2" Female NPT | 1/2" Female NPT | 75 | 2.95 | 27 | 1.06 |
| 8M 8F - C1-* | 1/2" Male NPT | 1/2" Female NPT | 70 | 2.76 | 27 | 1.06 |
| 8F 8M - C1-* | 1/2" Female NPT | 1/2" Male NPT | 70 | 2.76 | 27 | 1.06 |

COMMENT
COMMANDER

HOW TO ORDER

ZUM BESTELLEN

Example:

4F4M - C1 - 1 - SS - EPDM



| Inlet connections | Outlet connections | Serie | Cracking pressure | Material | O-ring Material |
|---------------------------|---------------------|---------|---------------------------------------|--|----------------------------------|
| ① 4M 4F 8M 8F | ② 4M-4F 8M-8F | ③ C1 | ④ 1/3, 1, 3 5, 10, 25 40, 50 | ⑤ SS (Stainless steel) B (Brass) | ⑥ FPM* NBR EPDM PTFE |

* FPM is the standard, you don't have to specify it

SERIES C2 - ONE PIECE - ADJUSTABLE

DESCRIPTION

Les clapets anti-retour série «C2» ont un encombrement limité grâce à un corps usiné en une seule pièce. Le clapet «C2» est disponible seulement avec des raccords NPT. La pression maximale d'utilisation est de 200 bar. Différentes pressions d'ouverture sont disponibles par réglage manuel.

DESCRIPTION

Series «C2» check valves have small volumes by virtue of a one piece machined body. Valve C2 is available only with NPT connectors. The maximum operating pressure is 200 bar. Different cracking pressures are available by manual adjustment.

BESCHREIBUNG

Die Rückschlagventile der Baureihe „C2“ weisen dank ihres aus einem Stück gearbeiteten Korpus einen geringen Raumbedarf auf. Das Ventil C2 ist ausschließlich mit NPT-Verbindungen lieferbar. Der maximale Einsatzdruck beträgt 200 bar. Durch manuelle Regulierung können verschiedene Öffnungsdrücke erzielt werden.

INFORMATIONS TECHNIQUES

TECHNICAL DATA

TECHNISCHE DATEN

| | Acier Inoxydable Stainless steel Edelstahl | Laiton Brass Messing |
|--|--|----------------------------|
| Pression de service max. Maximum working pressure Max Betriebsdruck | 200 bar (2900 psi) | |
| Pression inverse max. Maximum back pressure Max. Gegendruck | 200 bar (2900 psi) | |
| Température de service Temperature range Betriebstemperaturen | Voir le tableau "matière du joint" See the "Seal material" table Siehe die Tabelle "O-Ringwerkstoff" | |
| Pression d'ouverture Cracking pressure (psi) öffnungsdruck | 3 to 50 psi 50 to 150 psi 150 to 350 psi | |

| Matière du joint Seal Material O-Ringwerkstoff | Ref. | Température de service Temperature rating Betriebstemperaturen |
|--|------|--|
| FPM (fluorocarbon Rubber) | FPM | -25°C to 200°C -13°F to 392°F |
| NBR Nitrile | NBR | -30°C to 120°C -22°F to 248°F |
| EPDM (ethylene Propylene Rubber) | EPDM | -50°C to 135°C -58°F to 275°F |
| PTFE* (Teflon) | PTFE | 40°C to 180°C 40°F to 356°F |

*PTFE will not guaranty the tightness except when high back pressure is applied.

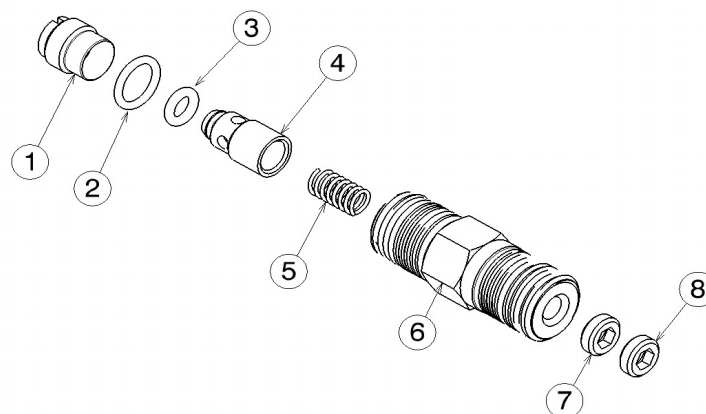
*PTFE ne garantit l'étanchéité qu'avec une contre-pression importante.

*PTFE garantiert die Dichtheit nur bei Hochdruck.

NOMENCLATURE

PART LIST

NOMENKLATUR



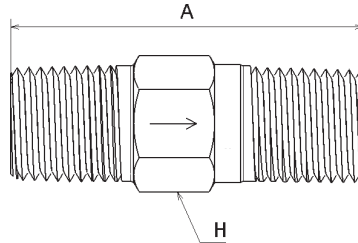
| Item | Désignation | Designation | Beschreibung | Matière Material Werkstoff | |
|------|----------------------|-----------------|-------------------|----------------------------------|-------|
| 1 | Siège | Seat | Sitz | AISI 316L | Brass |
| 2 | Joint torique | O-ring | O-ring | See table | / |
| 3 | Joint torique clapet | Poppet O-ring | O-ring Klappe | See table | / |
| 4 | Clapet | Poppet | Klappe | AISI 316L | Brass |
| 5 | Ressort | Spring | Feder | 302 | 302 |
| 6 | Corps | Body | Gehäuse | AISI 316L | Brass |
| 7 | Ecrou de réglage | Adjusting screw | Regulierschrauber | AISI 316L | Brass |

SERIES C2 - ONE PIECE - ADJUSTABLE

DIMENSIONS

DIMENSIONS

ABMESSUNGEN



| Part Number | Inlet - Outlet | | A | | H | |
|-------------|-----------------|-----------------|----|------|----|------|
| | Inlet | Outlet | mm | inch | mm | inch |
| 4M -C2-* | 1/4" Male NPT | 1/4" Male NPT | 41 | 161 | 14 | 0.55 |
| 4F -C2-* | 1/4" Female NPT | 1/4" Female NPT | 47 | 185 | 19 | 0.75 |
| 4M 4F -C2-* | 1/4" Male NPT | 1/4" Female NPT | 44 | 173 | 19 | 0.75 |
| 4F 4M -C2-* | 1/4" Female NPT | 1/4" Male NPT | 44 | 173 | 19 | 0.75 |
| 8M -C2-* | 1/2" Male NPT | 1/2" Male NPT | 65 | 2.56 | 22 | 0.87 |
| 8F -C2-* | 1/2" Female NPT | 1/2" Female NPT | 75 | 2.95 | 27 | 1.06 |
| 8M 8F -C2-* | 1/2" Male NPT | 1/2" Female NPT | 70 | 2.76 | 27 | 1.06 |
| 8F 8M -C2-* | 1/2" Female NPT | 1/2" Male NPT | 70 | 2.76 | 27 | 1.06 |

COMMENT
COMMANDER

HOW TO ORDER

ZUM BESTELLEN

Example:

4M4F - C2 - 50 - SS - EPDM
 (1) (2) (3) (4) (5) (6)

| Inlet connections | Outlet connections | Serie | Cracking pressure | Material | O-ring Material |
|-----------------------------|-----------------------------|-----------|--|--|------------------------------------|
| (1) 4M 4F 8M 8F | (2) 4M 4F 8M 8F | (3) C2 | (4) 3 (3 to 50) 50 (50 to 150) 150 (150 to 350) | (5) SS (Stainless steel) B (Brass) | (6) FPM* NBR EPDM PTFE |

* FPM is the standard, you don't have to specify it

SERIES C3

DESCRIPTION

Les clapets anti-retour série «C3» sont disponibles avec différents raccords. La pression maximale d'utilisation est de 300 bar pour l'acier inoxydable
 Pression différentielle maximum: 200 bar.
 Différentes pressions d'ouverture sont disponibles.
 Une étiquette de couleur indique la pression d'ouverture.

DESCRIPTION

Series »C3« check valves are available with different connectors. The maximum operating pressure is 300 bar.
 Maximum differential pressure: 200bar
 Different cracking pressures are available.
 A coloured label indicates the opening pressure.

BESCHREIBUNG

Die Rückschlagventile der Baureihe «C3» sind mit verschiedenen Verbindungen lieferbar. Der maximale Einsatzdruck beträgt 300 bar.
 Maximaler Differenzialdruck: 200 bar
 Es sind verschiedene Öffnungsdrücke lieferbar. Der Öffnungsdruck wird durch ein farbiges Etikett angezeigt.

INFORMATIONS TECHNIQUES

TECHNICAL DATA

TECHNISCHE DATEN

| | Acier Inoxydable Stainless steel Edelstahl | Laiton Brass Messing |
|---|--|----------------------------|
| Pression de service max. Maximum working pressure Max Betriebsdruck | 300 bar (4351 psi) | 200 bar (2900 psi) |
| Pression inverse max. Maximum back pressure Max. Gegendruck | 300 bar (4351 psi) | 200 bar (2900 psi) |
| Δ P Maximum | 200 bar (2900 psi) | |
| Température de service Temperature range Betriebstemperaturen | Voir le tableau "matière du joint" See the "Seal material" table Siehe die Tabelle "O-Ringwerkstoff" | |
| Pression d'ouverture Cracking pressure öffnungsdruck | 1/3, 1, 3 | 5, 10, 25 40, 50, 100 |

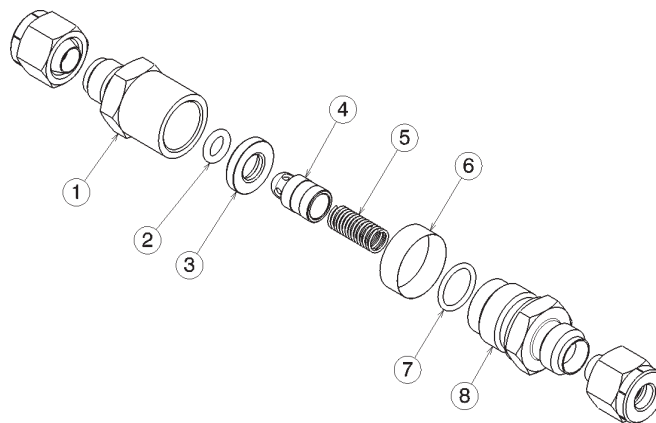
| Matière du joint Seal Material O-Ringwerkstoff | Ref. | Température de service Temperature rating Betriebstemperaturen |
|--|------|--|
| FPM (fluorocarbon Rubber) | FPM | -25°C to 200°C -13°F to 392°F |
| NBR Nitrile | NBR | -30°C to 120°C -22°F to 248°F |
| EPDM (ethylene Propylene Rubber) | EPDM | -50°C to 135°C -58°F to 275°F |
| PTFE* (Teflon) | PTFE | -40°C to 180°C -40°F to 356°F |

*PTFE will not guaranty the tightness except when high back pressure is applied.
 *PTFE ne garantit l'étanchéité qu'avec une contre-pression importante.
 *PTFE garantiert die Dichtheit nur bei Hochdruck.

NOMENCLATURE

PART LIST

NOMENKLATUR



| Item | Désignation | Designation | Beschreibung | Matière Material Werkstoff |
|------|-------------------|---------------|----------------|-------------------------------|
| 1 | Corps d'entrée | Inlet body | Eingangskörper | 316L |
| 2 | Siège | Seat | Sitz | FPM* |
| 3 | Support de siège | Seat stand | Sitzräger | 316L |
| 4 | Clapet | Valve | Klappe | 316L |
| 5 | Ressort | Spring | Feder | 302 |
| 6 | Etiquette couleur | Colored label | Farbetikette | PP |
| 7 | O-ring | O-ring | O-ring | FPM* |
| 8 | Corps de sortie | Outlet body | Ausgangskörper | 316 L |

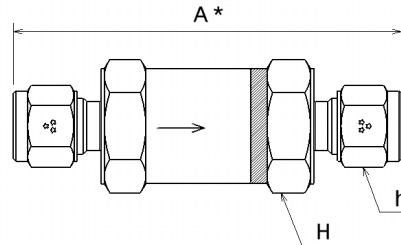
*For other materials, see the " Seal material" table .

SERIES C3

DIMENSIONS

DIMENSIONS

ABMESSUNGEN



Dimensions are measured with nuts in the finger tight position.

| Part Number | CONNECTIONS | | Orifice size | | A * | | H | | h | |
|-------------------|--------------------|--------------------|--------------|------|------|------|----|------|----|------|
| | Inlet | Outlet | mm | inch | mm | inch | mm | inch | mm | inch |
| 2S-C3-* | 1/8" Tube fittings | 1/8" Tube fittings | 2,4 | 0,09 | 57,5 | 2,26 | 19 | 0,75 | 12 | 0,47 |
| 2A-C3-* | 1/8" Tube adapter | 1/8" Tube adapter | 2 | 0,08 | 54,0 | 2,13 | 19 | 0,75 | | |
| 2M-C3-* | 1/8" Male NPT | 1/8" Male NPT | 3,2 | 0,13 | 46,0 | 1,81 | 19 | 0,75 | | |
| 2F-C3-* | 1/8" Female NPT | 1/8" Female NPT | 3,2 | 0,13 | 46,0 | 1,81 | 19 | 0,75 | | |
| 2M 2F-C3-* | 1/8" Male NPT | 1/8" Female NPT | 3,2 | 0,13 | 46,0 | 1,81 | 19 | 0,75 | | |
| 2F2M-C3-* | 1/8" Female NPT | 1/8" Male NPT | 3,2 | 0,13 | 46,0 | 1,81 | 19 | 0,75 | | |
| 2MP-C3-* | 1/8" Male BSPP | 1/8" Male BSPP | 3,2 | 0,13 | 46,0 | 1,81 | 19 | 0,75 | | |
| 2FP-C3-* | 1/8" Female BSPP | 1/8" Female BSPP | 3,2 | 0,13 | 46,0 | 1,81 | 19 | 0,75 | | |
| 2MT-C3-* | 1/8" Male BSPT | 1/8" Male BSPT | 3,2 | 0,13 | 46,0 | 1,81 | 19 | 0,75 | | |
| 2FT-C3-* | 1/8" Female BSPT | 1/8" Female BSPT | 3,2 | 0,13 | 46,0 | 1,81 | 19 | 0,75 | | |
| M3S-C3-* | 3mm Tube fittings | 3mm Tube fittings | 2,2 | 0,09 | 58,9 | 2,32 | 19 | 0,75 | 12 | 0,47 |

| Part Number | CONNECTIONS | | Orifice size | | A * | | H | | h | |
|-------------------|--------------------|--------------------|--------------|------|------|------|----|------|----|------|
| | Inlet | Outlet | mm | inch | mm | inch | mm | inch | mm | inch |
| 4S-C3-* | 1/4" Tube fittings | 1/4" Tube fittings | 4,5 | 0,18 | 62,5 | 2,46 | 19 | 0,75 | 14 | 0,55 |
| 4A-C3-* | 1/4" Tube adapter | 1/4" Tube adapter | 4,5 | 0,18 | 58,6 | 2,31 | 19 | 0,75 | | |
| 4M-C3-* | 1/4" Male NPT | 1/4" Male NPT | 4,5 | 0,18 | 56,5 | 2,22 | 19 | 0,75 | | |
| 4F-C3-* | 1/4" Female NPT | 1/4" Female NPT | 4,5 | 0,18 | 58,5 | 2,30 | 19 | 0,75 | | |
| 4M 4F-C3-* | 1/4" Male NPT | 1/4" Female NPT | 4,5 | 0,18 | 57,5 | 2,26 | 19 | 0,75 | | |
| 4F4M-C3-* | 1/4" Female NPT | 1/4" Male NPT | 4,5 | 0,18 | 57,5 | 2,26 | 19 | 0,75 | | |
| 4M 4S-C3-* | 1/4" Male NPT | 1/4" Sagalok | 4,5 | 0,18 | 60 | 2,36 | 19 | 0,75 | | |
| 4MP-C3-* | 1/4" Male BSPP | 1/4" Male BSPP | 4,5 | 0,18 | 54 | 2,13 | 19 | 0,75 | | |
| 4FP-C3-* | 1/4" Female BSPP | 1/4" Female BSPP | 4,5 | 0,18 | 47 | 1,85 | 19 | 0,75 | | |
| 4MT-C3-* | 1/4" Male BSPT | 1/4" Male BSPT | 4,5 | 0,18 | 56,5 | 2,22 | 19 | 0,75 | | |
| 4FT-C3-* | 1/4" Female BSPT | 1/4" Female BSPT | 4,5 | 0,18 | 58 | 2,28 | 19 | 0,75 | | |
| 4V-C3-* | 1/4" Male Gazel® | 1/4" Male Gazel® | 4,5 | 0,18 | 58 | 2,28 | 19 | 0,75 | | |
| M6S-C3-* | 6mm Tube fittings | 6mm Tube fittings | 4 | 0,16 | 61,8 | 2,43 | 19 | 0,75 | 14 | 0,55 |

SERIES C3

| Part Number | CONNECTIONS | | Orifice size | | A* | | H | | h | |
|-------------|--------------------|--------------------|--------------|------|------|------|----|------|----|------|
| | Inlet | Outlet | mm | inch | mm | inch | mm | inch | mm | inch |
| 6S-C3-* | 3/8" Tube fittings | 3/8" Tube fittings | 7,1 | 0,28 | 83 | 3,27 | 26 | 102 | 19 | 0,75 |
| 6A-C3-* | 3/8" Tube adapter | 3/8" Tube adapter | 7,1 | 0,28 | 78,5 | 3,09 | 26 | 102 | | |
| 6M-C3-* | 3/8" Male NPT | 3/8" Male NPT | 9,1 | 0,36 | 72,2 | 2,84 | 26 | 102 | | |
| 6F-C3-* | 3/8" Female NPT | 3/8" Female NPT | 9,1 | 0,36 | 72,2 | 2,84 | 26 | 102 | | |
| 6M 6F-C3-* | 3/8" Male NPT | 3/8" Female NPT | 9,1 | 0,36 | 72,2 | 2,84 | 26 | 102 | | |
| 6F 6M-C3-* | 3/8" Female NPT | 3/8" Male NPT | 9,1 | 0,36 | 72,2 | 2,84 | 26 | 102 | | |
| 6M 6S-C3-* | 3/8" Male NPT | 3/8" Tube fittings | 7,1 | 0,28 | 77,5 | 3,05 | 26 | 102 | | |
| 6M 8S-C3-* | 3/8" Male NPT | 1/2" Tube fittings | 9,1 | 0,36 | 80 | 3,15 | 26 | 102 | | |
| 6M P-C3-* | 3/8" Male BSPP | 3/8" Male BSPP | 9,1 | 0,36 | 66 | 2,60 | 26 | 102 | | |
| 6F P-C3-* | 3/8" Female BSPP | 3/8" Female BSPP | 9,1 | 0,36 | 67,6 | 2,66 | 26 | 102 | | |
| 6M T-C3-* | 3/8" Male BSPT | 3/8" Male BSPT | 9,1 | 0,36 | 72,2 | 2,84 | 26 | 102 | | |
| 6F T-C3-* | 3/8" Female BSPT | 3/8" Female BSPT | 9,1 | 0,36 | 72,2 | 2,84 | 26 | 102 | | |
| M 8S-C3-* | 8mm Tube fittings | 8mm Tube fittings | 6,4 | 0,25 | 82,2 | 3,24 | 26 | 102 | 17 | 0,67 |
| M 10S-C3-* | 10mm Tube fittings | 10mm Tube fittings | 7,9 | 0,31 | 84 | 3,31 | 26 | 102 | 19 | 0,75 |

| Part Number | CONNECTIONS | | Orifice size | | A* | | H | | h | |
|-------------|--------------------|--------------------|--------------|------|------|------|----|------|----|------|
| | Inlet | Outlet | mm | inch | mm | inch | mm | inch | mm | inch |
| 8S-C3-* | 1/2" Tube fittings | 1/2" Tube fittings | 10 | 0,39 | 92 | 3,62 | 32 | 126 | 22 | 0,87 |
| 8A-C3-* | 1/2" Tube adapter | 1/2" Tube adapter | 10 | 0,39 | 94 | 3,70 | 32 | 126 | | |
| 8M-C3-* | 1/2" Male NPT | 1/2" Male NPT | 10 | 0,39 | 86 | 3,39 | 32 | 126 | | |
| 8F-C3-* | 1/2" Female NPT | 1/2" Female NPT | 10 | 0,39 | 87 | 3,43 | 32 | 126 | | |
| 8M 8F-C3-* | 1/2" Male NPT | 1/2" Female NPT | 10 | 0,39 | 86 | 3,39 | 32 | 126 | | |
| 8F 8M-C3-* | 1/2" Female NPT | 1/2" Male NPT | 10 | 0,39 | 86 | 3,39 | 32 | 126 | | |
| 8M 8S-C3-* | 1/2" Male NPT | 1/2" Tube fittings | 10 | 0,39 | 88,8 | 3,50 | 32 | 126 | | |
| 8M P-C3-* | 1/2" Male BSPP | 1/2" Male BSPP | 10 | 0,39 | 76,3 | 3,00 | 32 | 126 | | |
| 8F P-C3-* | 1/2" Female BSPP | 1/2" Female BSPP | 10 | 0,39 | 97,5 | 3,84 | 32 | 126 | | |
| 8M T-C3-* | 1/2" Male BSPT | 1/2" Male BSPT | 10 | 0,39 | 86 | 3,39 | 32 | 126 | | |
| 8F T-C3-* | 1/2" Female BSPT | 1/2" Female BSPT | 10 | 0,39 | 86 | 3,39 | 32 | 126 | | |
| 8V-C3-* | 1/2" Male Gazel® | 1/2" Male Gazel® | 10 | 0,39 | 89 | 3,50 | 32 | 126 | | |
| M 12S-C3-* | 12mm Tube fittings | 12mm Tube fittings | 9,5 | 0,37 | 92 | 3,62 | 32 | 126 | 22 | 0,87 |

| Part Number | CONNECTIONS | | Orifice size | | A* | | H | | h | |
|--------------|--------------------|--------------------|--------------|------|-------|------|----|------|----|------|
| | Inlet | Outlet | mm | inch | mm | inch | mm | inch | mm | inch |
| 12S-C3-* | 3/4" Tube fittings | 3/4" Tube fittings | 15,1 | 0,59 | 104 | 4,09 | 36 | 142 | 30 | 1,18 |
| 12A-C3-* | 3/4" Tube adapter | 3/4" Tube adapter | 15,1 | 0,59 | 109 | 4,29 | 36 | 142 | | |
| 12M-C3-* | 3/4" Male NPT | 3/4" Male NPT | 15,1 | 0,59 | 95 | 3,74 | 36 | 142 | | |
| 12F-C3-* | 3/4" Female NPT | 3/4" Female NPT | 15,1 | 0,59 | 95 | 3,74 | 36 | 142 | | |
| 12M 12F-C3-* | 3/4" Male NPT | 3/4" Female NPT | 15,1 | 0,59 | 95 | 3,74 | 36 | 142 | | |
| 12F 12M-C3-* | 3/4" Female NPT | 3/4" Male NPT | 15,1 | 0,59 | 95 | 3,74 | 36 | 142 | | |
| 12M 12S-C3-* | 3/4" Male NPT | 3/4" Tube fittings | 15,1 | 0,59 | 101 | 3,98 | 36 | 142 | | |
| 12M P-C3-* | 3/4" Male BSPP | 3/4" Male BSPP | 15,1 | 0,59 | 96,3 | 3,79 | 36 | 142 | | |
| 12F P-C3-* | 3/4" Female BSPP | 3/4" Female BSPP | 15,1 | 0,59 | 89 | 3,50 | 36 | 142 | | |
| 12M T-C3-* | 3/4" Male BSPT | 3/4" Male BSPT | 15,1 | 0,59 | 98 | 3,86 | 36 | 142 | | |
| 12F T-C3-* | 3/4" Female BSPT | 3/4" Female BSPT | 15,1 | 0,59 | 98 | 3,86 | 36 | 142 | | |
| 12V-C3-* | 3/4" Male Gazel® | 3/4" Male Gazel® | 15,1 | 0,59 | 110,5 | 4,35 | 36 | 142 | | |
| M 20S-C3-* | 20mm Tube fittings | 20mm Tube fittings | 15,1 | 0,59 | 105 | 4,13 | 36 | 142 | 32 | 1,26 |
| M 22S-C3-* | 22mm Tube fittings | 22mm Tube fittings | 15,1 | 0,59 | 105 | 4,13 | 36 | 142 | 32 | 1,26 |

SERIES C3

| Part Number | CONNECTIONS | | Orifice size | | A* | | H | | h | |
|--------------|--------------------|--------------------|--------------|------|-----|------|----|------|----|------|
| | Inlet | Outlet | mm | inch | mm | inch | mm | inch | mm | inch |
| 16S-C3-* | ↑ Tube fittings | ↑ Tube fittings | 16,7 | 0,66 | 117 | 4,61 | 42 | 1,65 | 38 | 1,50 |
| 16A-C3-* | ↑ Tube adapter | ↑ Tube adapter | 16,7 | 0,66 | 119 | 4,69 | 42 | 1,65 | | |
| 16M-C3-* | ↑ Male NPT | ↑ Male NPT | 16,7 | 0,66 | 103 | 4,06 | 42 | 1,65 | | |
| 16F-C3-* | ↑ Female NPT | ↑ Female NPT | 16,7 | 0,66 | 103 | 4,06 | 42 | 1,65 | | |
| 16M 16F-C3-* | ↑ Male NPT | ↑ Female NPT | 16,7 | 0,66 | 103 | 4,06 | 42 | 1,65 | | |
| 16F 16M-C3-* | ↑ Female NPT | ↑ Male NPT | 16,7 | 0,66 | 103 | 4,06 | 42 | 1,65 | | |
| 16M 16S-C3-* | ↑ Male NPT | ↑ Tube fittings | 16,7 | 0,66 | 110 | 4,33 | 42 | 1,65 | | |
| 16M P-C32-* | ↑ Male BSPP | ↑ Male BSPP | 16,7 | 0,66 | 98 | 3,86 | 42 | 1,65 | | |
| 16F P-C3-* | ↑ Female BSPP | ↑ Female BSPP | 16,7 | 0,66 | 103 | 4,06 | 42 | 1,65 | | |
| 16M T-C3-* | ↑ Male BSPT | ↑ Male BSPT | 16,7 | 0,66 | 103 | 4,06 | 42 | 1,65 | | |
| 16F T-C3-* | ↑ Female BSPT | ↑ Female BSPT | 16,7 | 0,66 | 103 | 4,06 | 42 | 1,65 | | |
| 16V-C3-* | ↑ Male Gazel® | ↑ Male Gazel® | 16,7 | 0,66 | 106 | 4,17 | 42 | 1,65 | | |
| M 25S-C3-* | 25mm Tube fittings | 25mm Tube fittings | 16,7 | 0,66 | 119 | 4,69 | 42 | 1,65 | 25 | 0,98 |

COMMENT
COMMANDER

HOW TO ORDER

ZUM BESTELLEN

Example:

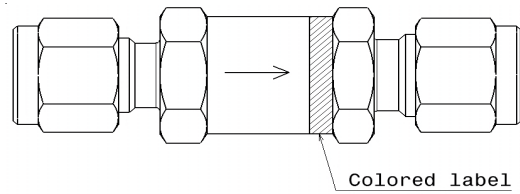
8S - 8M - C3 - 3 - SS - NBR

① ② ③ ④ ⑤ ⑥

| Inlet connections | Outlet connections | Serie | Cracking pressure | Material | O-ring Material |
|--|--|---------|---|--|--|
| ① 2S - 2A-2M-2F-2MP 2FP-2MT-2FT-M3 | ② 2S - 2A-2M-2F-2MP 2FP-2MT-2FT-M3 | ③ C3 | ④ 1/3 1 2 3 4 10 25 40 50 100 | ⑤ SS (Stainless steel) B (Brass) | ⑥ FPM* NBR EPDM PTFE |
| 4S-4A-4M-4F-4MP 4FP-4MT-4FT-4V-M6 | 4S-4A-4M-4F-4MP 4FP-4MT-4FT-4V-M6 | | | | |
| 6S-6A-6M-6F-6MP-M10 6FP-6MT-6FT-M8 | 6S-6A-6M-6F-6MP-M10 6FP-6MT-6FT-M8 | | | | |
| 8S-8A-8M-8F-8MP 8FP-8MT-8FT-8V-M12 | 8S-8A-8M-8F-8MP 8FP-8MT-8FT-8V-M12 | | | | |
| 12S-12A-12M-12F-12MP-M22 12FP-12MT-12FT-12V-M20 | 12S-12A-12M-12F-12MP-M22 12FP-12MT-12FT-12V-M20 | | | | |
| 16S-16A-16M-16F-16MP 16FP-16MT-16FT-16V-M25 | 16S-16A-16M-16F-16MP 16FP-16MT-16FT-16V-M25 | | | | |

* FPM is the standard, you don't have to specify it

SERIES C3



| Cracking Pressure | Label Color | | |
|-------------------|-------------|--------|----------|
| | Blanc | White | Weiß |
| 1/3 psi | Blanc | White | Weiß |
| 1 psi | Gris | Grey | Grau |
| 2 psi | Jaune | Yellow | Gelb |
| 3 psi | Orange | Orange | Orange |
| 4 psi | Rose | Pink | Rosa |
| 10 psi | Rouge | Red | Rot |
| 25 psi | Brun | Brown | Braun |
| 40 psi | Vert | Green | Grün |
| 50 psi | Bleu | Blue | Blau |
| 100 psi | Noir | Black | Schwartz |

SERIES C4 - ADJUSTABLE

DESCRIPTION

Les clapets anti-retour série «C4» sont disponibles avec différents raccords. La pression maximale d'utilisation est de 300 bar pour l'acier inoxydable. Pression différentielle maximum: 200 bar. Différentes pressions d'ouverture sont disponibles par réglage manuel. Une étiquette de couleur indique la pression d'ouverture.

DESCRIPTION

Series «C4» check valves are available with different connectors. The maximum operating pressure for stainless steel is 300 bar. Maximum differential pressure: 200bar. Different cracking pressures are available by manual adjustment. A coloured label indicates the opening pressure.

BESCHREIBUNG

Die Rückschlagventile der Baureihe «C4» sind mit verschiedenen Verbindungen lieferbar. Der maximale Einsatzdruck beträgt 300 bar bei Edelstahl. Maximaler Differenzialdruck 200bar. Durch manuelle Regulierung können verschiedene Öffnungsdrücke erzielt werden. Der Öffnungsdruck wird durch ein farbiges Etikett angezeigt.

INFORMATIONS TECHNIQUES

| | Acier Inoxydable Stainless steel Edelstahl | Laiton Brass Messing |
|---|--|----------------------------|
| Pression de service max. Maximum working pressure Max Betriebsdruck | 300 bar (4351 psi) | 200 bar (2900 psi) |
| Pression inverse max. Maximum back pressure Max. Gegendruck | 300 bar (4351 psi) | 200 bar (2900 psi) |
| ΔP Maximum | 200 bar (2900 psi) | |
| Température de service Temperature range Betriebstemperaturen | Voir le tableau "matière du joint" See the "Seal material" table Siehe die Tabelle "O-Ringwerkstoff" | |
| Pression d'ouverture Cracking pressure öffnungsdruck | 3 to 50 psi 50 to 150 psi 150 to 350 psi | |

TECHNICAL DATA

| Matière du joint Seal Material O-Ringwerkstoff | Ref. | Température de service Temperature rating Betriebstemperaturen |
|--|------|--|
| FPM (fluorocarbon Rubber) | FPM | -25°C to 200°C -13°F to 392°F |
| NBR Nitrile | NBR | -30°C to 120°C -22°F to 248°F |
| EPDM (ethylene Propylene Rubber) | EPDM | -50°C to 135°C -58°F to 275°F |
| PTFE* (Teflon) | PTFE | -40°C to 180°C -40°F to 356°F |

*PTFE will not guaranty the tightness except when high back pressure is applied.

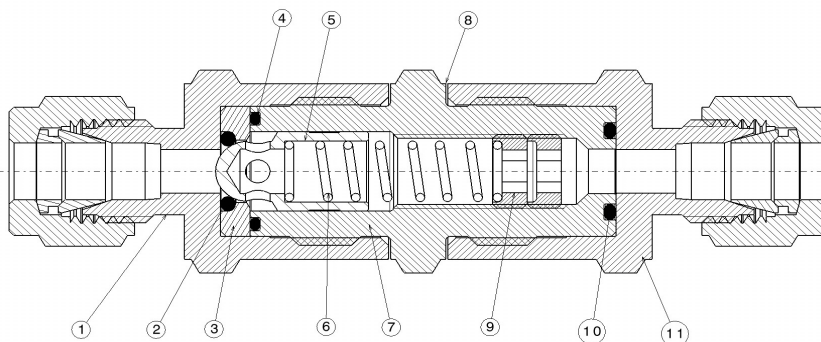
*PTFE ne garantit l'étanchéité qu'avec une contre-pression importante.

*PTFE garantiert die Dichtheit nur bei Hochdruck.

NOMENCLATURE

PART LIST

NOMENKLATUR



| Item | Désignation | Designation | Beschreibung | Matière Material Werkstoff | |
|------|-------------------|-----------------|----------------|----------------------------------|-------|
| 1 | Corps d'entrée | Inlet Body | Eingangskörper | AISI 316L | Brass |
| 2 | Siège O-ring | Seat | Sitz | FPM* | FPM* |
| 3 | Support siège | Seat stand | Sitzträger | AISI 316L | Brass |
| 4 | Joint torique | O-ring | O-ring | FPM* | FPM* |
| 5 | Clapet | Poppet | Klappe | AISI 316L | Brass |
| 6 | Ressort | Spring | Feder | 302 | 302 |
| 7 | Corps central | Center body | Central Body | AISI 316L | Brass |
| 8 | Étiquette couleur | Colored label | Farbetikette | PP | PP |
| 9 | Ecrou de réglage | Adjusting screw | Adjusting nut | AISI 316L | Brass |
| 10 | Joint torique | O-ring | O-ring | FPM* | FPM* |
| 11 | Corps de sortie | Outlet body | Ausgangskörper | AISI 316L | Brass |

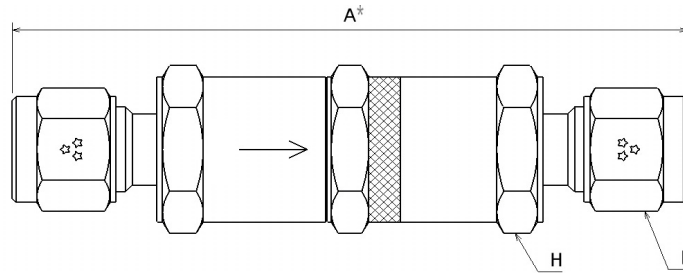
*For other materials, see the " Seal material " table.

SERIES C4 - ADJUSTABLE

DIMENSIONS

DIMENSIONS

ABMESSUNGEN



* Dimensions are measured with nuts in the finger tight position.

| Part Number | Inlet - Outlet | | Orifice size | | A* | | H | | h | |
|-------------------|--------------------|--------------------|--------------|------|-------|------|----|------|----|------|
| | Inlet | Outlet | mm | inch | mm | inch | mm | inch | mm | inch |
| 4S-C4-* | 1/4" Tube fittings | 1/4" Tube fittings | 4,5 | 0,18 | 81 | 3,19 | 19 | 0,75 | 14 | 0,55 |
| M 6S-C4-* | 6mm Tube fittings | 6mm Tube fittings | 4,5 | 0,18 | 82 | 3,23 | 19 | 0,75 | 14 | 0,55 |
| 4M -C4-* | 1/4" Male NPT | 1/4" Male NPT | 4,5 | 0,18 | 74 | 2,91 | 19 | 0,75 | | |
| 4M 4S-C4-* | 1/4" Male NPT | 1/4" Tube fittings | 4,5 | 0,18 | 77 | 3,03 | 19 | 0,75 | | |
| 4V-C4-* | 1/4" Male Gazel® | 1/4" Male Gazel® | 4,5 | 0,18 | 76,6 | 3,02 | 19 | 0,75 | | |
| M 8S-C4-* | 8mm Tube fittings | 8mm Tube fittings | 6,4 | 0,25 | 110,7 | 4,36 | 26 | 1,02 | 17 | 0,67 |

**COMMENT
COMMANDER**

HOW TO ORDER

ZUM BESTELLEN

Example:

4S - M6 - C4 - 50 - SS - EPDM

① ② ③ ④ ⑤ ⑥

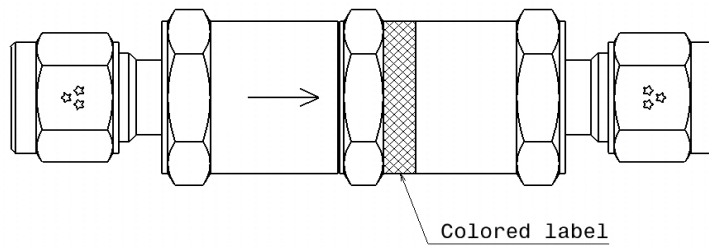
4M - C4 - 3 - B

① ② ③ ④

| Inlet connections | Outlet connections | Serie | Cracking pressure | Material | O-ring Material |
|----------------------------|----------------------------|---------|--|--|--|
| ① 4S-M6-4M-4V M8 | ② 4S-M6-4M-4V M8 | ③ C4 | ④ 3 (from 3 to 50 psi) 50 (from 50 to 150 psi) 150 (from 150 to 300 psi) | ⑤ SS (Stainless steel) B (Brass) | ⑥ FPM* NBR EPDM PTFE |

* FPM is the standard, you don't have to specify it

SERIES C4 - ADJUSTABLE



| Cracking Pressure | Label Color |
|---------------------|-------------|
| From 3 to 50 psi | White |
| From 50 to 150 psi | Blue |
| From 150 to 350 psi | Red |

SERIES AT300 - HIGH PRESSURE

DESCRIPTION

Les clapets anti-retour AT-300 sont disponibles avec différents raccords. La pression maximale d'utilisation est de 300 bar. Différentes pressions d'ouverture sont disponibles. Une étiquette de couleur indique la pression d'ouverture. Homologation R110

DESCRIPTION

Check valves AT300 are available with different connectors. The maximum operating pressure for stainless steel is 300 bar. Different cracking pressures are available. A coloured label indicates the opening pressure. Homologation R110

BESCHREIBUNG

Das Rückschlagventil AT-300 ist mit verschiedenen Verbindungen lieferbar. Der maximale Einsatzdruck beträgt 300 bar bei Edelstahl. Es sind verschiedene Öffnungsdrücke lieferbar. Der Öffnungsdruck wird durch ein farbiges Etikett angezeigt. Homologation R110

INFORMATIONS TECHNIQUES

TECHNICAL DATA

TECHNISCHE DATEN

| | Acier Inoxydable Stainless steel Edelstahl |
|---|--|
| Pression de service max. Maximum working pressure Max Betriebsdruck | 300 bar (4351 psi) |
| Pression inverse max. Maximum back pressure Max. Gegendruck | 300 bar (4351 psi) |
| ΔP Maximum | 300 bar (4351 psi) |
| Température de service Temperature range Betriebstemperaturen | Voir le tableau "matière du joint" See the "Seal material" table Siehe die Tabelle "O-Ringwerkstoff" |
| Pression d'ouverture Cracking pressure öffnungsdruck | 1/3, 1, 3, 5, 10, 25, 40, 50, 100 |

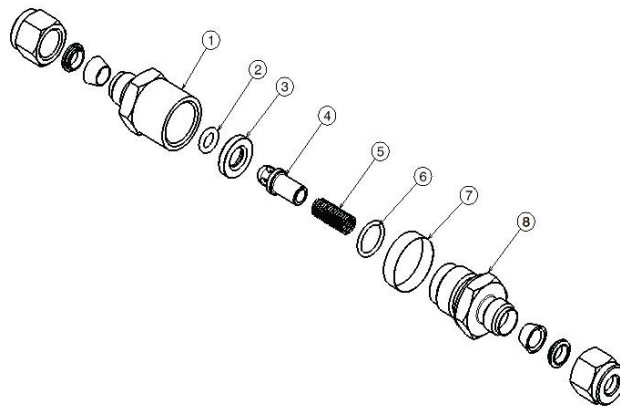
| Matière du joint Seal Material O-Ringwerkstoff | Ref. | Température de service Temperature rating Betriebstemperaturen |
|--|------|--|
| FPM (fluorocarbon Rubber) | FPM | -25°C to 200°C -13°F to 392°F |
| NBR Nitrile | NBR | -30°C to 120°C -22°F to 248°F |
| EPDM (ethylene Propylene Rubber) | EPDM | -50°C to 135°C -58°F to 275°F |
| PTFE* (Teflon) | PTFE | -40°C to 180°C -40°F to 356°F |

*PTFE will not guaranty the tightness except when high back pressure is applied.
*PTFE ne garantit l'étanchéité qu'avec une contre-pression importante.
*PTFE garantiert die Dichtheit nur bei Hochdruck.

NOMENCLATURE

PART LIST

NOMENKLATUR



| Item | Désignation | Designation | Beschreibung | Matière Material Werkstoff |
|------|-------------------|---------------|----------------|-------------------------------|
| 1 | Corps d'entrée | Inlet body | Eingangskörper | 316 L |
| 2 | Siège | Seat | Sitz | FPM* |
| 3 | Support de siège | Seat stand | Sitzträger | 316 L |
| 4 | Clapet | Valve | Klappe | 316 L |
| 5 | Ressort | Spring | Feder | 302 |
| 6 | Étiquette couleur | Colored label | Farbetikette | PP |
| 7 | Joint torique | O-ring | O-ring | FPM* |
| 8 | Corps de sortie | Outlet body | Ausgangskörper | 316 L |

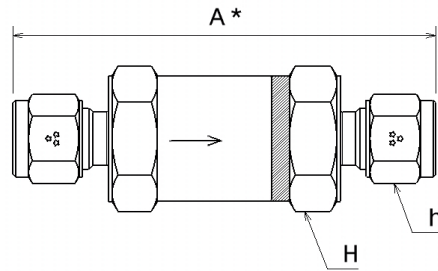
*For other materials, see the "Seal material" table.

SERIES AT300 - HIGH PRESSURE

DIMENSIONS

DIMENSIONS

ABMESSUNGEN



* Dimensions are measured with nuts in the finger tight position.

| Part Number | Inlet - Outlet | | Orifice size | | A * | | H | | h | |
|---------------------|--------------------|--------------------|--------------|------|------|------|----|------|----|------|
| | Inlet | Outlet | mm | inch | mm | inch | mm | inch | mm | inch |
| 4S-AT300-* | 1/4" Tube fittings | 1/4" Tube fittings | 4,5 | 0,18 | 62,5 | 2,46 | 19 | 0,75 | 14 | 0,55 |
| 4A-AT300-* | 1/4" Tube adapter | 1/4" Tube adapter | 4,5 | 0,18 | 58,6 | 2,31 | 19 | 0,75 | | |
| 4M-AT300-* | 1/4" Male NPT | 1/4" Male NPT | 4,5 | 0,18 | 56 | 2,20 | 19 | 0,75 | | |
| 4F-AT300-* | 1/4" Female NPT | 1/4" Female NPT | 4,5 | 0,18 | 56 | 2,20 | 19 | 0,75 | | |
| 4M4F-AT300-* | 1/4" Male NPT | 1/4" Female NPT | 4,5 | 0,18 | 56 | 2,20 | 19 | 0,75 | | |
| 4F4M-AT300-* | 1/4" Female NPT | 1/4" Male NPT | 4,5 | 0,18 | 56 | 2,20 | 19 | 0,75 | | |
| 4M4S-AT300-* | 1/4" Male NPT | 1/4" Tube fittings | 4,5 | 0,18 | 60 | 2,36 | 19 | 0,75 | | |
| 4MP-AT300-* | 1/4" Male BSPP | 1/4" Male BSPP | 4,5 | 0,18 | 54 | 2,13 | 19 | 0,75 | | |
| 4FP-AT300-* | 1/4" Female BSPP | 1/4" Female BSPP | 4,5 | 0,18 | 47 | 1,85 | 19 | 0,75 | | |
| 4MT-AT300-* | 1/4" Male BSPT | 1/4" Male BSPT | 4,5 | 0,18 | 56 | 2,20 | 19 | 0,75 | | |
| 4FT-AT300-* | 1/4" Female BSPT | 1/4" Female BSPT | 4,5 | 0,18 | 56 | 2,20 | 19 | 0,75 | | |
| 4V-AT300-* | 1/4" Male Gazel® | 1/4" Male Gazel® | 4,5 | 0,18 | 58,5 | 2,30 | 19 | 0,75 | | |
| M6S-AT300-* | 6mm Tube fittings | 6mm Tube fittings | 4 | 0,16 | 63,6 | 2,50 | 19 | 0,75 | 14 | 0,55 |

SERIES AT300 - HIGH PRESSURE

| Part Number | Inlet - Outlet | | Orifice size | | A* | | H | | h | |
|---------------------|--------------------|--------------------|--------------|------|------|------|----|------|----|------|
| | Inlet | Outlet | mm | inch | mm | inch | mm | inch | mm | inch |
| 6S-AT300-* | 3/8" Tube fittings | 3/8" Tube fittings | 7,1 | 0,28 | 83 | 3,27 | 26 | 102 | 19 | 0,75 |
| 6A-AT300-* | 3/8" Tube adapter | 3/8" Tube adapter | 7,1 | 0,28 | 78,5 | 3,09 | 26 | 102 | | |
| 6M-AT300-* | 3/8" Male NPT | 3/8" Male NPT | 9,1 | 0,36 | 72,2 | 2,84 | 26 | 102 | | |
| 6F-AT300-* | 3/8" Female NPT | 3/8" Female NPT | 9,1 | 0,36 | 72,2 | 2,84 | 26 | 102 | | |
| 6M6F-AT300-* | 3/8" Male NPT | 3/8" Female NPT | 9,1 | 0,36 | 72,2 | 2,84 | 26 | 102 | | |
| 6F6M-AT300-* | 3/8" Female NPT | 3/8" Male NPT | 9,1 | 0,36 | 72,2 | 2,84 | 26 | 102 | | |
| 6M6S-AT300-* | 3/8" Male NPT | 3/8" Tube fittings | 7,1 | 0,28 | 77,5 | 3,05 | 26 | 102 | | |
| 6M8S-AT300-* | 3/8" Male NPT | 1/2" Tube fittings | 9,1 | 0,36 | 80 | 3,15 | 26 | 102 | | |
| 6MP-AT300-* | 3/8" Male BSPP | 3/8" Male BSPP | 9,1 | 0,36 | 66 | 2,60 | 26 | 102 | | |
| 6FP-AT300-* | 3/8" Female BSPP | 3/8" Female BSPP | 9,1 | 0,36 | 67,6 | 2,66 | 26 | 102 | | |
| 6MT-AT300-* | 3/8" Male BSPT | 3/8" Male BSPT | 9,1 | 0,36 | 72,2 | 2,84 | 26 | 102 | | |
| 6FT-AT300-* | 3/8" Female BSPT | 3/8" Female BSPT | 9,1 | 0,36 | 72,2 | 2,84 | 26 | 102 | | |
| 6V-AT300-* | 3/8" Male Gazel® | 3/8" Male Gazel® | 7,1 | 0,28 | 83,2 | 3,28 | 26 | 102 | | |
| M8S-AT300-* | 8mm Tube fittings | 8mm Tube fittings | 6,4 | 0,25 | 82,2 | 3,24 | 26 | 102 | 17 | 0,67 |
| M10S-AT300-* | 10mm Tube fittings | 10mm Tube fittings | 7,9 | 0,31 | 84 | 3,31 | 26 | 102 | 19 | 0,75 |

COMMENT
COMMANDER

HOW TO ORDER

ZUM BESTELLEN

Example:

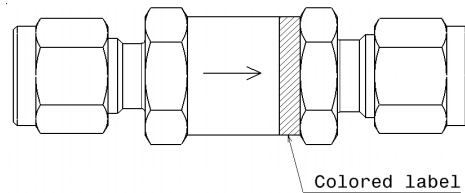
4S - AT300 - 10 - SS - EPDM

① ② ③ ④ ⑤ ⑥

| Inlet connections | Outlet connections | Serie | Cracking pressure | Material | O-ring Material |
|--|--|-------|---------------------------------------|-------------------------|-----------------------------|
| ① 2S - 2A-2M-2F-2MP 2FP-2MT-2FT-M3 | ② 2S - 2A-2M-2F-2MP 2FP-2MT-2FT-M3 | ③ | ④ 1/3 1 2 | ⑤ | ⑥ FPM* |
| 4S-4A-4M-4F-4MP 4FP-4MT-4FT-4V-M6 | 4S-4A-4M-4F-4MP 4FP-4MT-4FT-4V-M6 | AT300 | 3 4 10 25 40 50 100 | SS (Stainless steel) | NBR EPDM PTFE |
| 6S-6A-6M-6F-6MP-M10 6FP-6MT-6FT-6V-M8 | 6S-6A-6M-6F-6MP-M10 6FP-6MT-6FT-6V-M8 | | | | |

* FPM is the standard, you don't have to specify it

SERIES AT300 - HIGH PRESSURE



| Cracking Pressure | Label Color | | |
|-------------------|-------------|--------|----------|
| | Blanc | White | Weiß |
| 1/3 psi | Gris | Grey | Grau |
| 1 psi | Jaune | Yellow | Gelb |
| 2 psi | Orange | Orange | Orange |
| 3 psi | Rose | Pink | Rosa |
| 4 psi | Rouge | Red | Rot |
| 10 psi | Brun | Brown | Braun |
| 25 psi | Vert | Green | Grün |
| 40 psi | Bleu | Blue | Blau |
| 50 psi | Noir | Black | Schwartz |

SERIES PG

DESCRIPTION

Les purges manuelles Sagana® sont utilisées pour purger des canalisations, cuves, vannes... La purge peut être fermée manuellement ou avec une clé. L'écrou de réglage est serti de façon à empêcher l'expulsion de celui-ci sous pression. Les purges Sagana® sont disponibles avec différents raccords.

DESCRIPTION

Sagana® manual purge valves are used to flush out pipe works, tanks, valves ... The purge valve can be closed manually or with a wrench. The adjusting nut is tightened so as to prevent expulsion under pressure. Sagana® purge valves are available with different connectors.

BESCHREIBUNG

Die manuellen Entlüftungsventile von Sagana® werden zum Ablassen von Kanalisationen, Wannen, Ventilen usw. eingesetzt. Das Entlüftungsventil kann manuell oder mit einem Schlüssel geschlossen werden. Die Stellmutter ist gequetscht, damit sie sich unter Druck nicht öffnet. Die Sagana® Entlüftungsventile sind mit verschiedenen Verbindungen lieferbar.

INFORMATIONS TECHNIQUES

TECHNICAL DATA

TECHNISCHE DATEN

Inox / Stainless steel / Rostfreier Stahl :
PN = 270 bar / 3916 psi

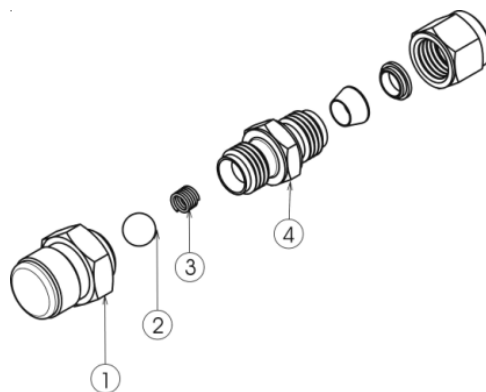
Laiton / Brass / Messing:
PN = 200 bar / 2900 psi

Air Cv= 0,04

NOMENCLATURE

PART LIST

NOMENKLATUR



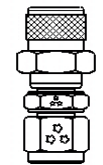
| Item | Désignation | Designation | Beschreibung | Material | |
|------|-------------|-------------|-----------------|------------------------|-------|
| | | | | Stainless Steel | Brass |
| 1 | Ecrous | Cap | Schraubenmutter | 316L Stainless Steel | Brass |
| 2 | Bille | Ball | Murmel | 316L Stainless Steel * | |
| 3 | Ressort | Spring | Sprungfeder | 302 Stainless Steel | |
| 4 | Corps | Body | Körper | 316L Stainless Steel | Brass |

SERIES PG

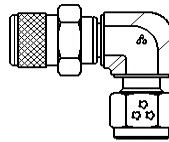
CONFIGURATIONS

CONFIGURATIONS

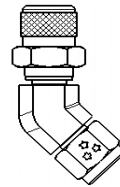
KONFIGURATIONEN



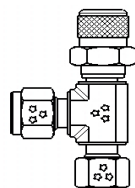
Straight



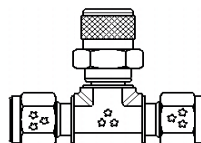
Elbow 90°



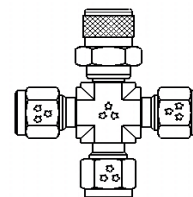
Elbow 45°



Tee 90°



Inline Tee

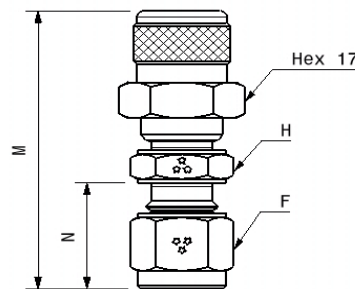


Cross

DIMENSIONS

DIMENSIONS

ABMESSUNGEN



| End Connections | Ref. | M* | | N | | H | | F | |
|------------------------------|------|------|------|------|------|----|------|------|------|
| | | mm | inch | mm | inch | mm | inch | (mm) | inch |
| 1/8" Sagana® Tube fittings | 2S | 33,9 | 1,33 | 15,2 | 0,60 | 14 | 0,55 | 12 | 0,47 |
| 1/4" Sagana® Tube fittings | 4S | 36,3 | 1,43 | 17,8 | 0,70 | 14 | 0,55 | 14 | 0,55 |
| 3/8" Sagana® Tube fittings | 6S | 39,8 | 1,57 | 19,3 | 0,76 | 14 | 0,55 | 19 | 0,75 |
| 3mm Sagana® Tube fittings | M3S | 33,9 | 1,33 | 15,3 | 0,60 | 14 | 0,55 | 12 | 0,47 |
| 6mm Sagana® Tube fittings | M6S | 36,3 | 1,43 | 17,7 | 0,70 | 14 | 0,55 | 14 | 0,55 |
| 10mm Sagana® Tube fittings | M10S | 39,8 | 1,57 | 19,5 | 0,77 | 14 | 0,55 | 19 | 0,75 |
| 1/8" Female NPT (BSPT, BSPP) | 2F | 26,6 | 1,05 | 9,5 | 0,37 | 14 | 0,55 | | |
| 1/4" Female NPT (BSPT, BSPP) | 4F | 31,1 | 1,22 | 14,3 | 0,56 | 19 | 0,75 | | |
| 3/8" Female NPT (BSPT, BSPP) | 6F | 32,9 | 1,30 | 14,3 | 0,56 | 22 | 0,87 | | |
| 1/2" Female NPT (BSPT, BSPP) | 8F | 37,8 | 1,49 | 19,1 | 0,75 | 27 | 1,06 | | |
| 1/8" Male NPT (BSPT, BSPP) | 2M | 28,1 | 1,11 | 9,5 | 0,37 | 14 | 0,55 | | |
| 1/4" Male NPT (BSPT, BSPP) | 4M | 33,2 | 1,31 | 14,3 | 0,56 | 14 | 0,55 | | |
| 3/8" Male NPT (BSPT, BSPP) | 6M | 33,7 | 1,33 | 14,3 | 0,56 | 19 | 0,75 | | |
| 1/2" Male NPT (BSPT, BSPP) | 8M | 40 | 1,57 | 19,1 | 0,75 | 22 | 0,87 | | |
| 1/8" Sagana® Tube adapter | 2A | 32,2 | 1,27 | 13,5 | 0,53 | 14 | 0,55 | | |
| 1/4" Sagana® Tube adapter | 4A | 35 | 1,38 | 15,9 | 0,63 | 14 | 0,55 | | |
| 3/8" Sagana® Tube adapter | 6A | 36 | 1,42 | 17,5 | 0,69 | 14 | 0,55 | | |
| 3mm Sagana® Tube adapter | M3A | 32,2 | 1,27 | 13,5 | 0,53 | 14 | 0,55 | | |
| 6mm Sagana® Tube adapter | M6A | 35 | 1,38 | 15,9 | 0,63 | 14 | 0,55 | | |
| 10mm Sagana® Tube adapter | M10A | 36 | 1,42 | 17,5 | 0,69 | 14 | 0,55 | | |

* Dimensions measured with nut in the finger thigh position.

SERIES PG

**COMMENT
COMMANDER**

HOW TO ORDER

ZUM BESTELLEN

Example:

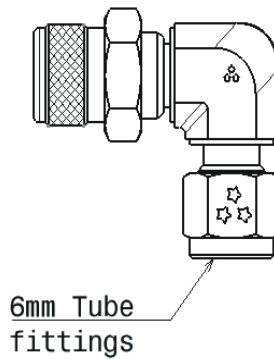
M6S - PG - E - SS

① ② ③ ④

Purge en coude 90° avec raccord
Sagana® double bague 6mm
Matière = AISI 316L




Purge valve in 90° bend with Sagana®
compression fittings 6mm connector
Material = AISI 316L

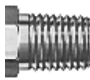
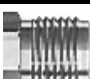
Entlüftungsventile mit 90° Krümmung
und 6mm Sagana®
Doppelringverschraubung.
Material = AISI 316L



| End connections | Purge | Model | Material | Ball | Thread |
|--|-------|---|---|------------------------------|--|
| ① | ② | ③ | ④ | ⑤ | ⑥ |
| 2S, 4S, 6S M3S, M6S, M10S 2F, 4F, 6F, 8F 2M, 4M, 6M, 8M 2FA, 4FA, 6FA M3FA, M6FA, M10FA | PG | S - Straight J - 45° Elbow E - 90° Elbow T - Inline tee TU - Angle Tee C - Union | SS - Stainless steel B - Brass | P - PTFE 316L* | BSPP Thread BSPT Thread |

*316L is the standard, you don't have to specify it

| | | | | |
|---|---|--|--|--|
| ★ ★★ | | | | |
|  | 1 bar = 14,51 PSI = 100 kPa. 1 PSI = .069 bar = 6,89 kPa 1 kPa (ISO) = .01 bar = .1451 PSI 1 Kg/cm ² = .980 bar = 14.22 PSI = 98 kPa | | | |
|  | T°C (C : Celsius) = (T°F - 32) / 1.8 = T°K - 273.16 T°F (F : Farenheit) = (1.8 x T°C) + 32 = (1.8 x T°K) + 523.69 T°K (K : Kelvin) = T°C + 273.16 = (T°F / 1.8) + 255.38 T°R (R : Rankine) = (1.8 x T°C) + 491.69 = T°F + 459.69 | | | |
|  | 1 inch = 25.4 mm 1 mm = 0.045 inch | | | |

| ★ ★★ | Normes Filetage | Norms Thread | Normen Gewinde |
|--|---|---|--|
|  | Conique (ISO 7/1) NPT (Briggs) : NFE 03-601 BSPT (Whitw orth) : NFE 03-004 | Tapered (ISO 7/1) NPT (Briggs): BS 21 (1968) BSPT (Whitw orth): BS 21 (1973) | Konisch (ISO 7/1) NPT (Briggs): / BSPT (Whitw orth): DIN 2999 |
|  | Parallèle (ISO228/1) BSPP (Whitw orth) : NFE 03-005 | Parallel (ISO228/1) BSPP (Whitw orth): BS 2779 (1973) | Parallel (ISO228/1) BSPP (Whitw orth): DIN 3852 |

| ★ ★★ | Classes de pression des filetages - Laiton | Thread pressure ratings - Brass | Klassifizierung - Messing |
|---------|---|------------------------------------|------------------------------|
|---------|---|------------------------------------|------------------------------|

| FILETAGE MÂLE - MALE THREAD - AUSSENGEWINDE | | | | | | | |
|---|------|------|------|------|------|------|--|
| F | 1/8" | 1/4" | 3/8" | 1/2" | 3/4" | 1" | |
| Bar⇒ | 345 | 276 | 269 | 262 | 248 | 179 | |
| PSI⇒ | 5000 | 4000 | 3900 | 3800 | 3600 | 2600 | |

| FILETAGE FEMELLE - FEMALE THREAD - INNENGEWINDE | | | | | | | |
|---|------|------|------|------|------|------|--|
| F | 1/8" | 1/4" | 3/8" | 1/2" | 3/4" | 1" | |
| Bar⇒ | 221 | 227 | 179 | 165 | 159 | 152 | |
| PSI⇒ | 3200 | 3300 | 2600 | 2400 | 2300 | 2200 | |

| ★ ★★ | Classes de pression des filetages - Acier Inox 316L | Thread pressure ratings - Stainless Steel 316L | Klassifizierung - 316L |
|---------|--|---|---------------------------|
|---------|--|---|---------------------------|

| FILETAGE MÂLE - MALE THREAD - AUSSENGEWINDE | | | | | | | |
|---|------|------|------|------|------|------|--|
| F | 1/8" | 1/4" | 3/8" | 1/2" | 3/4" | 1" | |
| Bar⇒ | 648 | 517 | 503 | 496 | 469 | 345 | |
| PSI⇒ | 9400 | 7500 | 7300 | 7200 | 6800 | 5000 | |

| FILETAGE FEMELLE - FEMALE THREAD - INNENGEWINDE | | | | | | | |
|---|------|------|------|------|------|------|--|
| F | 1/8" | 1/4" | 3/8" | 1/2" | 3/4" | 1" | |
| Bar⇒ | 420 | 427 | 345 | 317 | 296 | 283 | |
| PSI⇒ | 6100 | 6200 | 5000 | 4600 | 4300 | 4100 | |



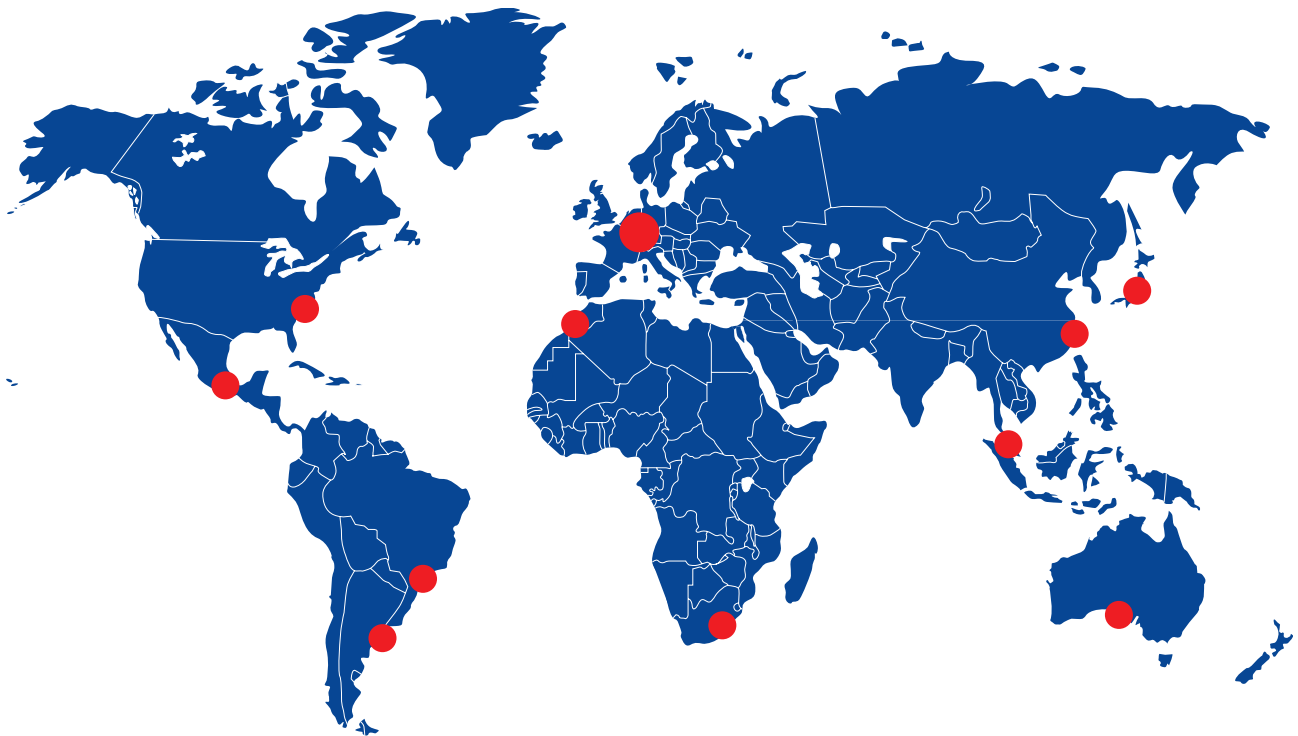
SAGANA
INSTRUMENTATION

email:
info@sagana.rotarex.com

website: www.rotarex.com



Headquarters Luxembourg



information



ROTAREX
Group