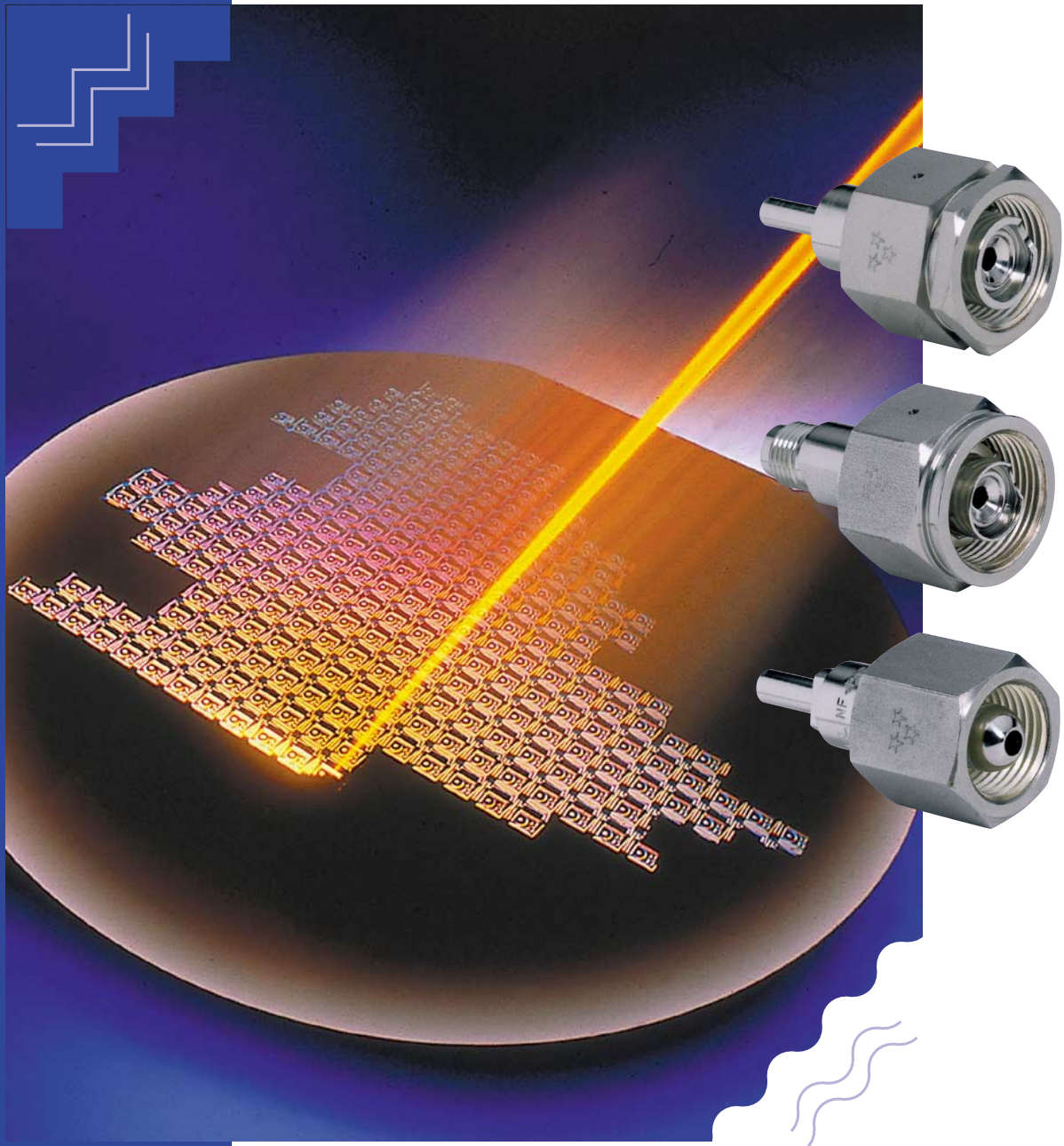


# MTA

## Fittings & Accessories



MTA-cat-9-0

## CONTENTS

<b>3</b>	<b>COMPONENTS &amp; MANUFACTURING</b>		
<b>4</b>	<b>MATERIALS / HOW TO ORDER</b>		
<b>6</b>	<b>GASES / NORMS ASSIGNEMENT TABLE</b>		
<b>7</b>	<b>MTA - STANDARD FEATURES CGA, DIN, BS, AFNOR, JIS</b>	<b>UHP</b>	
<b>8</b>	<b>MTA - STANDARD FEATURES CGA, DIN, BS, AFNOR, JIS</b>	<b>HP</b>	
<b>10</b>	<b>MTA - STANDARD CONNECTORS</b>	<b>UHP</b>	<b>CGA/DISS</b>
<b>12</b>	<b>MTA - STANDARD ADAPTORS AND BLANK PLUGS</b>	<b>UHP</b>	<b>CGA/DISS</b>
<b>14</b>	<b>MTA - STANDARD INLET CONNECTOR</b>	<b>HP</b>	<b>CGA</b>
<b>16</b>	<b>MTA - STANDARD ADAPTORS AND BLANK PLUGS &amp; CAPS</b>	<b>HP</b>	<b>CGA</b>
<b>18</b>	<b>MTA - STANDARD CYLINDER VALVE OUTLET SEAL CAPS &amp; PLUGS</b>	<b>HP</b>	<b>CGA</b>
<b>20</b>	<b>MTA - STANDARD INLET CONNECTORS</b>	<b>HP</b>	<b>DIN</b>
<b>22</b>	<b>MTA - STANDARD ADAPTORS AND BLANK PLUGS &amp; CAPS</b>	<b>HP</b>	<b>DIN</b>
<b>24</b>	<b>MTA - STANDARD CYLINDER VALVE OUTLET SEAL CAPS &amp; PLUGS</b>	<b>HP</b>	<b>DIN</b>
<b>26</b>	<b>MTA - STANDARD INLET CONNECTORS</b>	<b>HP</b>	<b>BS</b>
<b>28</b>	<b>MTA - STANDARD ADAPTORS AND BLANK PLUGS &amp; CAPS</b>	<b>HP</b>	<b>BS</b>
<b>30</b>	<b>MTA - STANDARD CYLINDER VALVE OUTLET SEAL CAPS &amp; PLUGS</b>	<b>HP</b>	<b>BS</b>
<b>32</b>	<b>MTA - STANDARD INLET CONNECTORS</b>	<b>HP</b>	<b>AFNOR</b>
<b>34</b>	<b>MTA - STANDARD ADAPTORS AND BLANK PLUGS &amp; CAPS</b>	<b>HP</b>	<b>AFNOR</b>
<b>36</b>	<b>MTA - STANDARD CYLINDER VALVE OUTLET SEAL CAPS &amp; PLUGS</b>	<b>HP</b>	<b>AFNOR</b>
<b>38</b>	<b>MTA - STANDARD INLET CONNECTORS</b>	<b>HP</b>	<b>JIS</b>
<b>40</b>	<b>MTA - STANDARD ADAPTORS AND BLANK PLUGS &amp; CAPS</b>	<b>HP</b>	<b>JIS</b>
<b>42</b>	<b>MTA - STANDARD CYLINDER VALVE OUTLET SEAL CAPS &amp; PLUGS</b>	<b>HP</b>	<b>JIS</b>

- Full range of HP & UHP Products (Cylinder connectors, cap nuts, adaptors, gaskets)
- Upstream connection  
fits all local norms and standards  
- CGA, DISS, JIS, DIN, BS, NF
- Downstream connection
  - Imperial and metric BWO ends,
  - face seal glands
  - NPT
- Materials of construction  
Standards: 316L MOD VAR, 316L LS, Brass  
Options: Hastelloy®, Nickel
- Customized solutions on request

### MTA - COMPONENTS



- ISO 9001 certification
- Fully integrated processing (machining, electropolishing, decontamination, packaging)
- Certified class 10 CR
- Products manufactured at our « **THREE STAR PROCESS** » standards which include:
  - Full traceability at all steps (SPC CAQS)
  - Continuous monitoring of key process parameters.
  - Consistent checking of product performances regarding both functionality and cleanliness.

### MTA - MANUFACTURING



## Explanation of legends

- S = Stainless Steel AISI/316L
- V = AISI 316L AOD-VAR
- N = Nickel
- H = Hastelloy®
- B = Brass
- SS 303 = Stainless Steel AISI 303

## Explanation of connections and Gaskets Materials

- MM = connection Metal/Metal
- PCTFE = Polychlorotrifluorethylene
- PVDF = Polyvinylidene fluoride
- EPDM = Ethylene - Propylene - Rubber
- FRM = Fluorocarbon - Rubber
- CR = Chloroprene - Rubber
- NI = Nickel
- SP = Silver plated stainless Steel

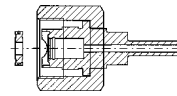
## Explanation of surface finish

- Ra 0.2 EP : Average Roughness 0.2  $\mu\text{m}$  Electro-polished
- Ra 0.4 EP : Average Roughness 0.4  $\mu\text{m}$  Electro-polished
- Ra 0.8 EP : Average Roughness 0.8  $\mu\text{m}$  Non Electro-polished

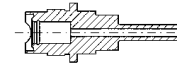
## HOW TO ORDER

According to the pieces you want to order please refer to the corresponding columns in the following pages:

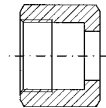
Complete assembly:  
Ref. Number



nipple:



nut:



gasket:



When you have defined the corresponding reference,  
please do not forget to add the requested material:

- Example:
- 1) Complete Assembly  
Cylinder valve connection: CGA 632  
End connection: BW 1/4"
  - 2) Nipple material : AOD VAR
  - 3) Gasket material: Nickel

**Final Reference for your order : 40 - 632 - 4BW - V - Ni**

*Note:*

*The surface finish is standard depending on the connection types*

*Other surface finish requirements are available upon request such as for instance RA 0,4 non-electropolished (passivated)*



**GASES / NORMS ASSIGNMENT TABLE<sup>(1)</sup>**

<b>GAS</b>		<b>UHP CGA/DISS</b>	<b>CGA</b>	<b>BS</b>	<b>DIN</b>	<b>AFNOR</b>	<b>JIS</b>
Ammonia	NH <sub>3</sub>	720	660	10	6	C	22-R
Argon	Ar	718	580	3	6	C	22/23-R
Arsenic Pentafluoride	As <sub>2</sub> F <sub>5</sub>	642			8		
Arsine	AsH <sub>3</sub>	632	350	4	1	E	22 - L
Boron Trichloride	BCl <sub>3</sub>	634	660	14	8	J	22 - L
Boron Trifluoride	BF <sub>3</sub>	642	330	14	8	J	22 - L
Bromochlorodifluoromethane	BrCClF <sub>2</sub>		660	6	6	C	
Bromotrifluoromethane	BrCF <sub>3</sub>		660	6	6	C	
Butane	C <sub>4</sub> H <sub>10</sub>		510	9	1	E	23 - L
Carbon Dioxide	CO <sub>2</sub>	716	320	8	6	C	
Carbon Monoxide	CO	724	350	4	5	E	22 - L
Carbonyl Sulfide	COS		330			E	
Chlorine	Cl	728	660	6,14	8	J	26 - R
Chlorine Trifluoride	ClF <sub>3</sub>		670	6		P	26 - L
Chlorodifluoromethane	CClF <sub>2</sub> H		660	6	6	C	
Chlorotrifluoromethane	CClF <sub>3</sub>		660		6	C	
Diborane	B <sub>2</sub> H <sub>6</sub>	632	350	4			22 - L
Dichlorodifluoromethane	CCl <sub>2</sub> F <sub>2</sub>	716	660	6	6	C	
Dichlorofluoromethane	CCl <sub>2</sub> FH		660	6	6	C	
Dichlorosilane	H <sub>2</sub> SiCl <sub>2</sub>	636	678	15	5		
Dichlorotetrafluoroethane	C <sub>2</sub> Cl <sub>2</sub> F <sub>4</sub>		660	6	6	C	
Diethylzinc	(C <sub>2</sub> H <sub>5</sub> ) <sub>2</sub> Zn	726	510				
1,1-Difluoroethylene	C <sub>2</sub> F <sub>2</sub> H <sub>2</sub>		350		1	E	22 - L
Dimethylzinc	(CH <sub>3</sub> ) <sub>2</sub> Zn	726					
Dimethylamine	C <sub>2</sub> H <sub>7</sub> N		705	11	1	E	22/26-L
Dimethylether	C <sub>2</sub> H <sub>6</sub> O		510		1	E	26 - L
Disilane	Si <sub>2</sub> H <sub>6</sub>		632			E	
Ethane	C <sub>2</sub> H <sub>6</sub>		350		1	E	22 - L
Ethyl Chloride	C <sub>2</sub> H <sub>5</sub> Cl		300	7,17	1	E	26 - L
Ethylene	C <sub>2</sub> H <sub>4</sub>		350	2	1	E	22 - L
Fluorine	F <sub>2</sub>		679		8	F	22 - R
Germane	GeH <sub>4</sub>	632	350			E	
Halocarbons <sup>(2)</sup>	/	716	660	6	6	C	
Helium	He	718	326	3	6	C	22/23-R
Hydrogen	H <sub>2</sub>	724	350	4	1	E	22 - L
Hydrogen Bromide	HBr	634	330		8	K	26 - R
Hydrogen Chloride	HCl	634	330		8	K	26 - R
Hydrogen Fluoride	MF	638	660	6		K	26 - R
Hydrogen Iodide	HI	670	330			K	
Hydrogen Selenide	H <sub>2</sub> Se	632	350	4	5	E	
Hydrogen Sulfide	H <sub>2</sub> S	722	330	15	5	E	
Isobutane	C <sub>4</sub> H <sub>10</sub>		510	2	1,2,4	E	
Isobutylene	C <sub>4</sub> H <sub>8</sub>		510	2	1	E	23 - L
Krypton	Kr	718	510	3	6	C	22/23-R
Neon	Ne	718	580	3	6	C	22/23-R

## GASES / NORMS ASSIGNMENT TABLE

GAS		UHP CGA	CGA	BS	DIN	AFNOR	JIS
Nitrogen	N <sub>2</sub>	718	580	3	10	C	22/23-R
Nitrous Oxide	N <sub>2</sub> O	712	580	13	11	G	
Oxygen	O <sub>2</sub>	714	740	3	9	F	22/23-R
Perfluoropropane	C <sub>3</sub> F <sub>8</sub>	716	660				
Phosgene	CCl <sub>2</sub> O		660	6,14	8	K	26-R
Phosphine	PH <sub>3</sub>	632	350	4	1	E	
Phosphorus Pentafluoride	PF <sub>5</sub>	642	330				
Silane	SiH <sub>4</sub>	632	350	3	1	E	
Silicon Tetrachloride	SiCl <sub>4</sub>	636		Compression Fittings			
Silicon Tetrafluoride	SiF <sub>4</sub>	642	330	6	8		
Sulphur Dioxide	SO <sub>2</sub>	660	10,16	7	K	26 - R	
Sulphur Hexafluoride	SF <sub>6</sub>	716	326	6	6	C	
Trichlorosilane	HSiCl <sub>3</sub>		636				
1,1,1-Trichlorotrifluoroethane	C <sub>2</sub> Cl <sub>3</sub> F <sub>3</sub>	716	660				
Trichlorofluoromethane	CCl <sub>3</sub> F		660				
Triethylaluminium	AlC <sub>2</sub> H <sub>5</sub>	726	510				
Trifluoromethane	CF <sub>3</sub> H		660				
Trimethylamine	C <sub>3</sub> H <sub>9</sub> N		705	11	1	E	26 - L
Tungsten Hexafluoride	WF <sub>6</sub>	638	670		8	J	
Vinyl Bromide	BrC <sub>2</sub> H <sub>3</sub>		510		1	E	26 - L
Vinyl Chloride	C <sub>2</sub> ClH <sub>3</sub>		510	7	1	E	26 - L
Vinyl Fluoride	C <sub>2</sub> FH <sub>3</sub>		350		1	E	22 - L
Xenon	Xe	718	580	3	6	C	22/26-L

**(1) This list is non exhaustive and for your information only**

**Source:**

CGA V 1 1994

BS 341 Part 1 1991

DIN 477 Teil 1

AFNOR NF E 29 - 650

JIS (Jap.) B 8246 1996

**(2) Halocarbon CF<sub>4</sub> 14: CGA 320 or 580**

## INLET CONNECTORS

- 316L/316 L AOD VAR/HASTELLOY®
- CGA DISS NON ROTATING SYSTEM
- 3 STAR PROCESS

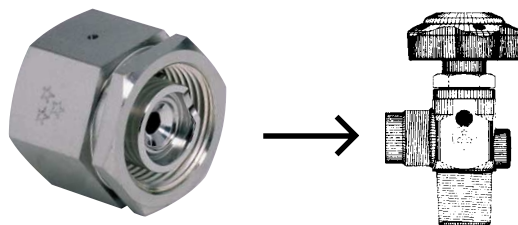


## ADAPTORS

- 316 L SS
- CGA DISS NON ROTATING SYSTEM
- 3 STAR PROCESS

CYLINDER VALVE  
OUTLET SEAL CAPS

- 316 L SS
- CGA DISS NON ROTATING SYSTEM
- NICKEL GASKET, RING AND CHAIN INCLUDED
- DELIVERED WITH OR WITHOUT A CHAIN



## GASKETS

**MATERIAL:**

- 316 L SILVER PLATED (option on request)
- NICKEL (standard)
- PCTFE (standard)
- AL (option on request)

**RETAINER RING:**

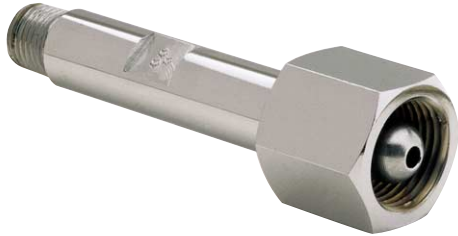
- 316 L SS INCLUDED



- GASKETS IN ALUMINUM AVAILABLE UPON REQUEST
- GASKETS WITH FLOWRESTRICTORS AVAILABLE UPON REQUEST
- 3 STAR PROCESS



**NIPPLES/NUTS**



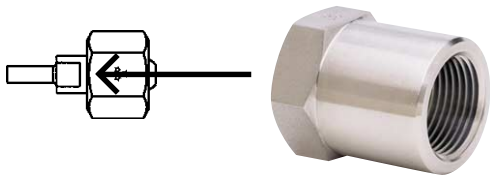
- 316 L SS
- BRASS
- 3 STAR PROCESS

**ADAPTORS**



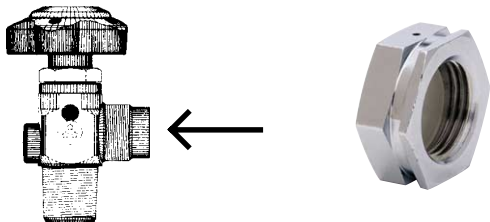
- 316 L SS
- BRASS

**CONNECTORS  
BLANK PLUG/CAP**



- STAINLESS STEEL SILVER PLATED
- DUAL LEAK TEST PORTS

**CYLINDER VALVE  
OUTLET SEAL CAPS**



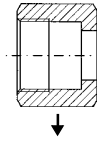
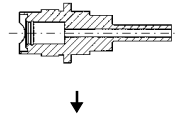
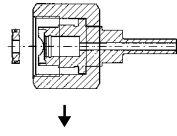
- 303/316 L SS
- VARIOUS SEALING DISC MATERIAL
- CHAIN AND RING. STAINLESS STEEL
- DELIVERED WITH OR WITHOUT A CHAIN

**GASKETS/WASHERS**



**MATERIAL:**

- PCTFE
- PVDF
- PTFE (option on request)



DISS/CGA V-1 Ref. Number	End Connection	Ref. Number Nipple, Nut, Gasket	Length (L)	Internal Surface Finish $\mu\text{m}$ ( $\mu\text{inch}$ )	Ref. Number Nipple	Ref. Number Nut	HEX Nut	Ref. Number Gasket (Material)
								Nickel
632	BW 1/4" FS 1/4" NPT 1/4"	40-632-4BW-_ 40-632-4FS-_ 40-632-4N-__	2-1/2" 3" 3"	Ra 0.2 (8 Ra) EP Ra 0.2 (8 Ra) EP Ra 0.4 (16 Ra) EP	10-632-4BW-_ 10-632-4FS-_ 10-632-4N-__	20-632-N-__	1.1/4"	30-NI-0
634	BW 1/4" FS 1/4" NPT 1/4"	40-634-4BW-_ 40-634-4FS-_ 40-634-4N-__	2-1/2" 3" 3"	Ra 0.2 (8 Ra) EP Ra 0.2 (8 Ra) EP Ra 0.4 (16 Ra) EP	10-634-4BW-_ 10-634-4FS-_ 10-634-4N-__	20-634-N-__	1.1/4"	30-NI-0
636	BW 1/4" FS 1/4" NPT 1/4"	40-636-4BW-_ 40-636-4FS-_ 40-636-4N-__	2-1/2" 3" 3"	Ra 0.2 (8 Ra) EP Ra 0.2 (8 Ra) EP Ra 0.4 (16 Ra) EP	10-636-4BW-_ 10-636-4FS-_ 10-636-4N-__	20-636-N-__	1.1/4"	30-NI-0
638	BW 1/4" FS 1/4" NPT 1/4"	40-638-4BW-_ 40-638-4FS-_ 40-638-4N-__	2-1/2" 3" 3"	Ra 0.2 (8 Ra) EP Ra 0.2 (8 Ra) EP Ra 0.4 (16 Ra) EP	10-638-4BW-_ 10-638-4FS-_ 10-638-4N-__	20-638-N-__	1.1/4"	30-NI-0
640	BW 1/4" FS 1/4" NPT 1/4"	40-640-4BW-_ 40-640-4FS-_ 40-640-4N-__	2-1/2" 3" 3"	Ra 0.2 (8 Ra) EP Ra 0.2 (8 Ra) EP Ra 0.4 (16 Ra) EP	10-640-4BW-_ 10-640-4FS-_ 10-640-4N-__	20-640-N-__	1.1/4"	30-NI-0
712	BW 1/4" FS 1/4" NPT 1/4"	40-712-4BW-_ 40-712-4FS-_ 40-712-4N-__	2-1/2" 3" 3"	Ra 0.2 (8 Ra) EP Ra 0.2 (8 Ra) EP Ra 0.4 (16 Ra) EP	10-712-4BW-_ 10-712-4FS-_ 10-712-4N-__	20-712-N-__	1.3/8"	30-NI-0
714	BW 1/4" FS 1/4" NPT 1/4"	40-714-4BW-_ 40-714-4FS-_ 40-714-4N-__	2-1/2" 3" 3"	Ra 0.2 (8 Ra) EP Ra 0.2 (8 Ra) EP Ra 0.4 (16 Ra) EP	10-714-4BW-_ 10-714-4FS-_ 10-714-4N-__	20-714-N-__	1.3/8"	30-NI-0
716	BW 1/4" FS 1/4" NPT 1/4"	40-716-4BW-_ 40-716-4FS-_ 40-716-4N-__	2-1/2" 3" 3"	Ra 0.2 (8 Ra) EP Ra 0.2 (8 Ra) EP Ra 0.4 (16 Ra) EP	10-716-4BW-_ 10-716-4FS-_ 10-716-4N-__	20-716-N-__	1.3/8"	30-NI-0
718	BW 1/4" FS 1/4" NPT 1/4"	40-718-4BW-_ 40-718-4FS-_ 40-718-4N-__	2-1/2" 3" 3"	Ra 0.2 (8 Ra) EP Ra 0.2 (8 Ra) EP Ra 0.4 (16 Ra) EP	10-718-4BW-_ 10-718-4FS-_ 10-718-4N-__	20-718-N-__	1.3/8"	30-NI-0
720	BW 1/4" FS 1/4" NPT 1/4"	40-720-4BW-_ 40-720-4FS-_ 40-720-4N-__	2-1/2" 3" 3"	Ra 0.2 (8 Ra) EP Ra 0.2 (8 Ra) EP Ra 0.4 (16 Ra) EP	10-720-4BW-_ 10-720-4FS-_ 10-720-4N-__	20-720-N-__	1.3/8"	30-NI-0
722	BW 1/4" FS 1/4" NPT 1/4"	40-722-4BW-_ 40-722-4FS-_ 40-722-4N-__	2-1/2" 3" 3"	Ra 0.2 (8 Ra) EP Ra 0.2 (8 Ra) EP Ra 0.4 (16 Ra) EP	10-722-4BW-_ 10-722-4FS-_ 10-722-4N-__	20-722-N-__	1.3/8"	30-NI-0
724	BW 1/4" FS 1/4" NPT 1/4"	40-724-4BW-_ 40-724-4FS-_ 40-724-4N-__	2-1/2" 3" 3"	Ra 0.2 (8 Ra) EP Ra 0.2 (8 Ra) EP Ra 0.4 (16 Ra) EP	10-724-4BW-_ 10-724-4FS-_ 10-724-4N-__	20-724-N-__	1.3/8"	30-NI-0
726	BW 1/4" FS 1/4" NPT 1/4"	40-726-4BW-_ 40-726-4FS-_ 40-726-4N-__	2-1/2" 3" 3"	Ra 0.2 (8 Ra) EP Ra 0.2 (8 Ra) EP Ra 0.4 (16 Ra) EP	10-726-4BW-_ 10-726-4FS-_ 10-726-4N-__	20-726-N-__	1.3/8"	30-NI-0
728	BW 1/4" FS 1/4" NPT 1/4"	40-728-4BW-_ 40-728-4FS-_ 40-728-4N-__	2-1/2" 3" 3"	Ra 0.2 (8 Ra) EP Ra 0.2 (8 Ra) EP Ra 0.4 (16 Ra) EP	10-728-4BW-_ 10-728-4FS-_ 10-728-4N-__	20-728-N-__	1.3/8"	30-NI-0



Ref.  
Number  
Gasket (Material)

PCTFE

30-PC-0

30-PC-0

30-PC-0

30-PC-0

30-PC-0

30-PC-0

30-PC-0

30-PC-0

30-PC-0

30-PC-0

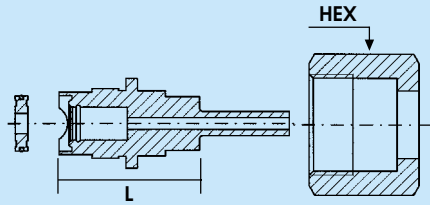
30-PC-0

30-PC-0

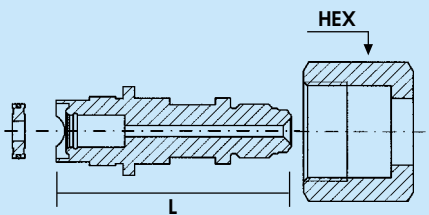
30-PC-0

30-PC-0

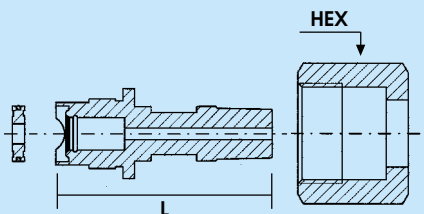
**BUTT WELD**



**FACE SEAL**



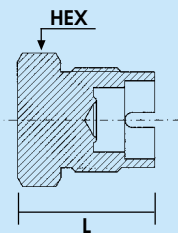
**NPT**



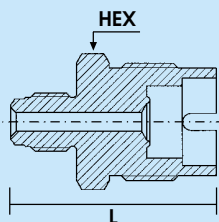
CGA V-1 Ref. Number	End Connection	Ref. Number Adaptor Blank Plug/Cap	Length (L)	HEX Nut	Internal Surface Finish $\mu\text{m}$ ( $\mu$ inch)	Nipple Available Material			
						S	V	N	H
632	Blank Plug FS 1/4" NPT 1/4"	50-632-BP-_ 60-632-4FS-_ 60-632-4N-_ _	1.5"	1.1/8"	Ra 0.2 (8 Ra) EP	•	o	x	x
			2"		Ra 0.2 (8 Ra) EP	•	o	x	x
			1.8"		Ra 0.4 (16 Ra) EP	•	o	x	x
634	Blank Plug FS 1/4" NPT 1/4"	50-634-BP-_ 60-634-4FS-_ 60-634-4N-_ _	1.5"	1.1/8"	Ra 0.2 (8 Ra) EP	•	o	x	x
			2"		Ra 0.2 (8 Ra) EP	•	o	x	x
			1.8"		Ra 0.4 (16 Ra) EP	•	o	x	x
636	Blank Plug FS 1/4" NPT 1/4"	50-636-BP-_ 60-636-4FS-_ 60-636-4N-_ _	1.5"	1.1/8"	Ra 0.2 (8 Ra) EP	•	o	x	x
			2"		Ra 0.2 (8 Ra) EP	•	o	x	x
			1.8"		Ra 0.4 (16 Ra) EP	•	o	x	x
638	Blank Plug FS 1/4" NPT 1/4"	50-638-BP-_ 60-638-4FS-_ 60-638-4N-_ _	1.5"	1.1/8"	Ra 0.2 (8 Ra) EP	•	o	x	x
			2"		Ra 0.2 (8 Ra) EP	•	o	x	x
			1.8"		Ra 0.4 (16 Ra) EP	•	o	x	x
640	Blank Plug FS 1/4" NPT 1/4"	50-640-BP-_ 60-640-4FS-_ 60-640-4N-_ _	1.5"	1.1/8"	Ra 0.2 (8 Ra) EP	•	o	x	x
			2"		Ra 0.2 (8 Ra) EP	•	o	x	x
			1.8"		Ra 0.4 (16 Ra) EP	•	o	x	x
712	Blank Plug FS 1/4" NPT 1/4"	50-712-BP-_ 60-712-4FS-_ 60-712-4N-_ _	1.5"	1.1/4"	Ra 0.2 (8 Ra) EP	•	o	x	x
			2"		Ra 0.2 (8 Ra) EP	•	o	x	x
			1.8"		Ra 0.4 (16 Ra) EP	•	o	x	x
714	Blank Plug FS 1/4" NPT 1/4"	50-714-BP-_ 60-714-4FS-_ 60-714-4N-_ _	1.5"	1.1/4"	Ra 0.2 (8 Ra) EP	•	o	x	x
			2"		Ra 0.2 (8 Ra) EP	•	o	x	x
			1.8"		Ra 0.4 (16 Ra) EP	•	o	x	x
716	Blank Plug FS 1/4" NPT 1/4"	50-716-BP-_ 60-716-4FS-_ 60-716-4N-_ _	1.5"	1.1/4"	Ra 0.2 (8 Ra) EP	•	o	x	x
			2"		Ra 0.2 (8 Ra) EP	•	o	x	x
			1.8"		Ra 0.4 (16 Ra) EP	•	o	x	x
718	Blank Plug FS 1/4" NPT 1/4"	50-718-BP-_ 60-718-4FS-_ 60-718-4N-_ _	1.5"	1.1/4"	Ra 0.2 (8 Ra) EP	•	o	x	x
			2"		Ra 0.2 (8 Ra) EP	•	o	x	x
			1.8"		Ra 0.4 (16 Ra) EP	•	o	x	x
720	Blank Plug FS 1/4" NPT 1/4"	50-720-BP-_ 60-720-4FS-_ 60-720-4N-_ _	1.5"	1.1/4"	Ra 0.2 (8 Ra) EP	•	o	x	x
			2"		Ra 0.2 (8 Ra) EP	•	o	x	x
			1.8"		Ra 0.4 (16 Ra) EP	•	o	x	x
722	Blank Plug FS 1/4" NPT 1/4"	50-722-BP-_ 60-722-4FS-_ 60-722-4N-_ _	1.5"	1.1/4"	Ra 0.2 (8 Ra) EP	•	o	x	x
			2"		Ra 0.2 (8 Ra) EP	•	o	x	x
			1.8"		Ra 0.4 (16 Ra) EP	•	o	x	x
724	Blank Plug FS 1/4" NPT 1/4"	50-724-BP-_ 60-724-4FS-_ 60-724-4N-_ _	1.5"	1.1/4"	Ra 0.2 (8 Ra) EP	•	o	x	x
			2"		Ra 0.2 (8 Ra) EP	•	o	x	x
			1.8"		Ra 0.4 (16 Ra) EP	•	o	x	x
726	Blank Plug FS 1/4" NPT 1/4"	50-726-BP-_ 60-726-4FS-_ 60-726-4N-_ _	1.5"	1.1/4"	Ra 0.2 (8 Ra) EP	•	o	x	x
			2"		Ra 0.2 (8 Ra) EP	•	o	x	x
			1.8"		Ra 0.4 (16 Ra) EP	•	o	x	x
728	Blank Plug FS 1/4" NPT 1/4"	50-728-BP-_ 60-728-4FS-_ 60-728-4N-_ _	1.5"	1.1/4"	Ra 0.2 (8 Ra) EP	•	o	x	x
			2"		Ra 0.2 (8 Ra) EP	•	o	x	x
			1.8"		Ra 0.4 (16 Ra) EP	•	o	x	x

• = available  
o = on request  
x = not available

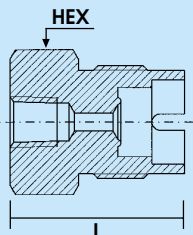
**CONNECTORS  
BLANK PLUGS/CAPS**



**FACE SEAL**



**NPT**



**CYLINDER VALVES GASKETS & OUTLET SEAL CAPS**

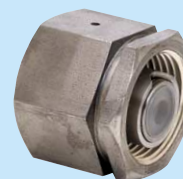
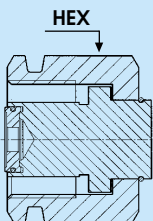


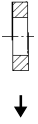
Fig. 1

CGA V-1 Number	Ref. Number	Material
630	30-NI-0	Nickel
710	30-PC-0	PCTFE

CGA V-1 Number	End Connection	Ref. Number	HEX	Fig	S303	S316
630	Outlet Cap	70-630-OC	1.1/4"	1	•	•
710	Outlet Cap	70-710-OC	1.3/8"	1	•	•







Ref. Number  
Gasket (Material)

MM

Metal to Metal sealing  
(No Gasket)

Metal to Metal sealing  
(No Gasket)

Metal to Metal sealing  
(No Gasket)

Metal to Metal sealing  
(No Gasket)

Metal to Metal sealing  
(No Gasket)

Metal to Metal sealing  
(No Gasket)

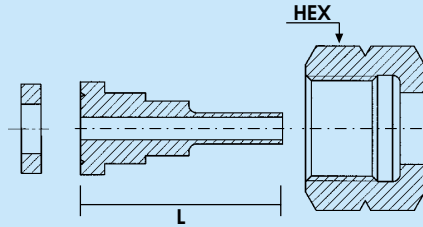
Metal to Metal sealing  
(No Gasket)

Metal to Metal sealing  
(No Gasket)

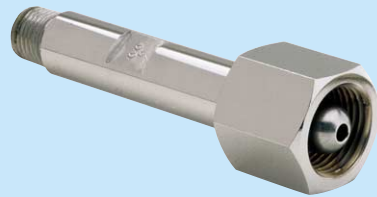
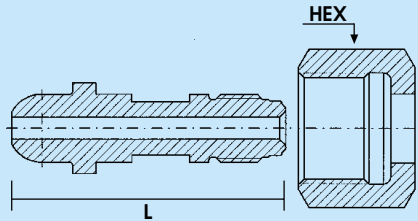
Metal to Metal sealing  
(No Gasket)

Metal to Metal sealing  
(No Gasket)

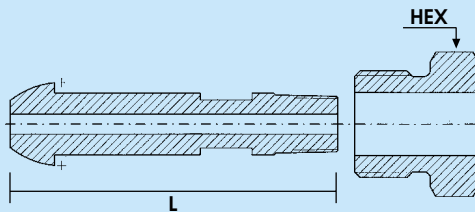
**CGA 330/BUTT WELD**



**CGA 540/FACE SEAL**



**CGA 580/NPT**



CGA V-1 Ref. Number	End Connection	Ref. Number Adaptor Blank Plug/Cap	Length (L)	HEX	Internal Surface Finish 1 <sup>°)</sup> µm (µ inch)	Nipple Available Material				
						S	V	N	H	B
296	FS 1/4"	60-296-4FS-__	2"	1.1/8"	Ra 0.2 (8 Ra) EP	•		X	X	X
	NPT 1/4"	60-296-4N-__	2"		Ra 0.8 (32 Ra)	•		X	X	•
	Blank Cap	50-296-BC-__	1-3/8"		—	•		X	X	•
320	FS 1/4"	60-320-4FS-__	1-3/4"	1"	Ra 0.2 (8 Ra) EP	•	X	X	X	X
	NPT 1/4"	60-320-4N-__	1-1/8"		Ra 0.8 (32 Ra)	•	X	X	X	•
	Blank Plug	50-320-BP-__	1-1/8"		—	•	O	X	X	•
326	FS 1/4"	60-326-4FS-__	1-3/4"	1"	Ra 0.2 (8 Ra) EP	•	X	X	X	X
	NPT 1/4"	60-326-4N-__	1-3/8"		Ra 0.8 (32 Ra)	•	X	X	X	•
	Blank Plug	50-326-BP-__	1-1/8"		—	•	O	X	X	•
330	FS 1/4"	60-330-4FS-__	1-3/4"	1"	Ra 0.2 (8 Ra) EP	•	X	X	X	X
	NPT 1/4"	60-330-4N-__	1-3/8"		Ra 0.8 (32 Ra)	•	X	X	X	•
	Blank Plug	50-330-BP-__	1-1/8"		—	•	O	X	X	•
346	FS 1/4"	60-346-4FS-__	1-7/8"	1"	Ra 0.2 (8 Ra) EP	•	X	X	X	X
	NPT 1/4"	60-346-4N-__	1-3/8"		Ra 0.8 (32 Ra)	•	X	X	X	O
	Blank Plug	50-346-BP-__	1-1/8"		—	•	O	X	X	O
350	FS 1/4"	60-350-4FS-__	1-7/8"	1"	Ra 0.2 (8 Ra) EP	•	X	X	X	X
	NPT 1/4"	60-350-4N-__	1-3/8"		Ra 0.8 (32 Ra)	•	X	X	X	•
	Blank Plug	50-350-BP-__	1-1/8"		—	•	O	X	X	•
510	FS 1/4"	60-510-4FS-__	2"	1.1/8"	Ra 0.2 (8 Ra) EP	•	X	X	X	X
	NPT 1/4"	60-510-4N-__	2"		Ra 0.8 (32 Ra)	•	X	X	X	•
	Blank Cap	50-510-BC-__	1-3/8"		—	•	O	X	X	•
540	FS 1/4"	60-540-4FS-__	1-7/8"	1"	Ra 0.2 (8 Ra) EP	•	X	X	X	X
	NPT 1/4"	60-540-4N-__	1-1/2"		Ra 0.8 (32 Ra)	•	X	X	X	•
	Blank Plug	50-540-BP-__	1-1/8"		—	•	O	X	X	•
580	FS 1/4"	60-580-4FS-__	2"	1.1/4"	Ra 0.2 (8 Ra) EP	•	X	X	X	X
	NPT 1/4"	60-580-4N-__	2"		Ra 0.8 (32 Ra)	•	X	X	X	•
	Blank Cap	50-580-BC-__	1-3/8"		—	•	O	X	X	•
590	FS 1/4"	60-590-4FS-__	2"	1.1/4"	Ra 0.2 (8 Ra) EP	•	X	X	X	X
	NPT 1/4"	60-590-4N-__	2"		Ra 0.8 (32 Ra)	•	X	X	X	•
	Blank Cap	50-590-BC-__	1-3/8"		—	•	O	X	X	•
660	FS 1/4"	60-660-4FS-__	1-1/2"	1.1/8"	Ra 0.2 (8 Ra) EP	•	X	O	O	X
	NPT 1/4"	60-660-4N-__	1-1/4"		Ra 0.8 (32 Ra)	•	X	O	O	•
	Blank Plug	50-660-BP-__	7/8"		—	•	O	O	O	•
670	FS 1/4"	60-670-4FS-__	1-1/2"	1.1/8"	Ra 0.2 (8 Ra) EP	•	X	O	O	X
	NPT 1/4"	60-670-4N-__	1-1/4"		Ra 0.8 (32 Ra)	•	X	O	O	O
	Blank Plug	50-670-BP-__	7/8"		—	•	O	O	O	O
677	FS 1/4"	60-677-4FS-__	1-1/2"	1.1/8"	Ra 0.2 (8 Ra) EP	•	X	O	O	X
	NPT 1/4"	60-677-4N-__	1-3/8"		Ra 0.8 (32 Ra)	•	X	O	O	•
	Blank Plug	50-677-BP-__	1"		—	•	O	O	O	•
678	FS 1/4"	60-678-4FS-__	1-1/2"	1.1/8"	Ra 0.2 (8 Ra) EP	•	X	O	O	X
	NPT 1/4"	60-678-4N-__	1-3/8"		Ra 0.8 (32 Ra)	•	X	O	O	X
	Blank Plug	50-678-BP-__	1"		—	•	O	O	O	X
679	FS 1/4"	60-679-4FS-__	1-3/4"	1.1/8"	Ra 0.2 (8 Ra) EP	•	X	O	O	X
	NPT 1/4"	60-679-4N-__	1-1/4"		Ra 0.8 (32 Ra)	•	X	O	O	O
	Blank Plug	50-679-BP-__	7/8"		—	•	O	O	O	O

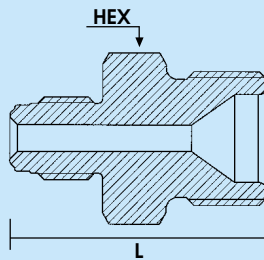
• = available

o = on request

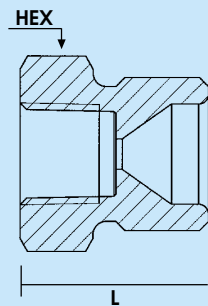
x = not available

1<sup>°)</sup> = not suitable for brass

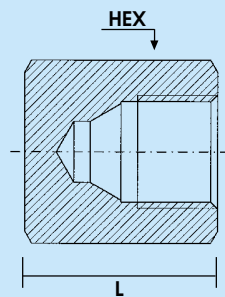
**ADAPTORS  
FACE SEAL**



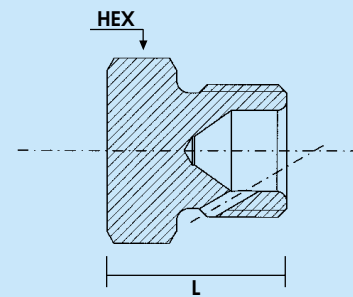
**ADAPTORS  
NPT**



**CONNECTORS  
BLANK CAPS**



**CONNECTORS  
BLANK PLUGS**



CGA V-1 Ref. Number	End Connection	Ref. Number Outlet Seal Cap	Length (L)	Fig.	S 303	S 316	B
296	Outlet Plug	30-296-OP- <u>  </u>	*	3 - 4	•	x	•
320	Outlet Cap	30-320-OC- <u>  </u>	0.57"	1	•	x	•
326	Outlet Cap	30-326-OC- <u>  </u>	*	2	•	o	•
330	Outlet Cap	30-330-OC- <u>  </u>	0.57	1	•	o	•
346	Outlet Cap	30-346-OC- <u>  </u>	*	2	•	x	•
350	Outlet Cap	30-350-OC- <u>  </u>	*	2	•	o	•
510	Outlet Plug	30-510-OP- <u>  </u>	*	3 - 4	•	x	•
540	Outlet Cap	30-540-OC- <u>  </u>	*	2	•	x	•
580	Outlet Plug	30-580-OP- <u>  </u>	*	3 - 4	•	x	•
590	Outlet Plug	30-590-OP- <u>  </u>	*	3 - 4	•	x	•
660	Outlet Cap	30-660-OC- <u>  </u>	0.57	1	•	o	•
670	Outlet Cap	30-670-OC- <u>  </u>	0.57	1	•	o	•
677	Outlet Cap	30-677-OC- <u>  </u>	*	2	•	o	•
678	Outlet Cap	30-678-OC- <u>  </u>	*	2	•	o	o
679	Outlet Cap	30-679-OC- <u>  </u>	*	2	•	o	•

• = available  
o = on request  
x = not available

**CYLINDER VALVES  
OUTLET SEAL CAPS**

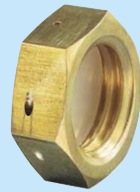
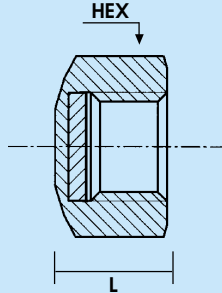


Fig. 1

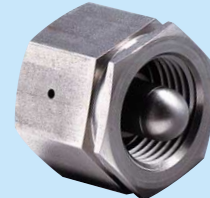
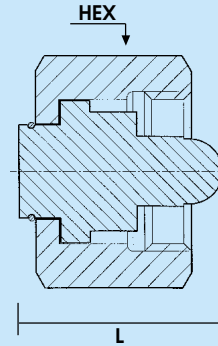


Fig. 2

**CYLINDER VALVES  
OUTLET SEAL PLUGS**

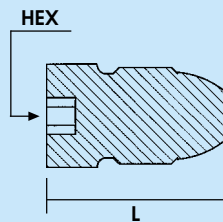


Fig. 3

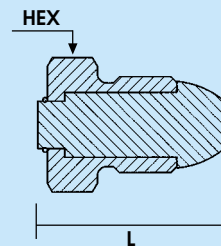
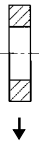
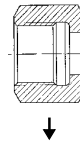
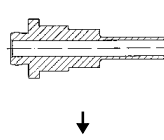
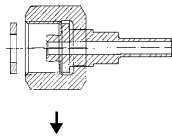


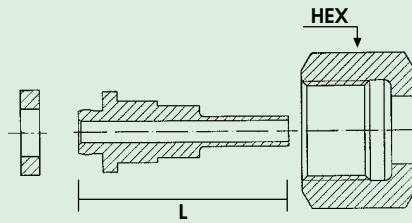
Fig. 4



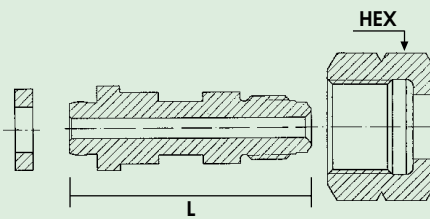
DIN 477 Ref. Number	End Connection	Ref. Number Nipple, Nut, Gasket	Length (L) mm (Inch)	Internal Surface Finish 1° µm (µ inch)	Ref. Number Nipple	Ref. Number Nut	HEX Nut in mm	Ref. Number Gasket (Material)	Ref. Number Gasket (Material)
							Stainless steel	PVDF	PCTFE
1	BW 1/4" FS 1/4" NPT 1/4"	40-DIN1-4BW-_ 40-DIN1-4FS-_ 40-DIN1-4N-_ _	70 (2.76") 70 (2.76") 90 (3.54")	Ra 0.2 (8 Ra) EP Ra 0.2 (8 Ra) EP Ra 0.8 (32 Ra)	10-DIN1-4BW-_ 10-DIN1-4FS-_ 10-DIN1-4N-_ _	20-DIN1-N-_ _	30	30-PV-6	30-PC-6
5	BW 1/4" FS 1/4" NPT 1/4"	40-DIN5-4BW-_ 40-DIN5-4FS-_ 40-DIN5-4N-_ _	67 (2.46") 67 (2.46") 87 (3.42")	Ra 0.2 (8 Ra) EP Ra 0.2 (8 Ra) EP Ra 0.8 (32 Ra)	10-DIN5-4BW-_ 10-DIN5-4FS-_ 10-DIN5-4N-_ _	20-DIN5-N-_ _	32	30-PV-3	30-PC-3
6	BW 1/4" FS 1/4" NPT 1/4"	40-DIN6-4BW-_ 40-DIN6-4FS-_ 40-DIN6-4N-_ _	70 (2.76") 70 (2.76") 90 (3.54")	Ra 0.2 (8 Ra) EP Ra 0.2 (8 Ra) EP Ra 0.8 (32 Ra)	10-DIN6-4BW-_ 10-DIN6-4FS-_ 10-DIN6-4N-_ _	20-DIN6-N-_ _	30	30-PV-6	30-PC-6
7	BW 1/4" FS 1/4" NPT 1/4"	40-DIN7-4BW-_ 40-DIN7-4FS-_ 40-DIN7-4N-_ _	70 (2.76") 70 (2.76") 90 (3.54")	Ra 0.2 (8 Ra) EP Ra 0.2 (8 Ra) EP Ra 0.8 (32 Ra)	10-DIN7-4BW-_ 10-DIN7-4FS-_ 10-DIN7-4N-_ _	20-DIN7-N-_ _	30	30-PV-6	30-PC-6
8	BW 1/4" FS 1/4" NPT 1/4"	40-DIN8-4BW-_ 40-DIN8-4FS-_ 40-DIN8-4N-_ _	67 (2.46") 67 (2.46") 87 (3.42")	Ra 0.2 (8 Ra) EP Ra 0.2 (8 Ra) EP Ra 0.8 (32 Ra)	10-DIN8-4BW-_ 10-DIN8-4FS-_ 10-DIN8-4N-_ _	20-DIN8-N-_ _	32	30-PV-3	30-PC-3
9	BW 1/4" FS 1/4" NPT 1/4"	40-DIN9-4BW-_ 40-DIN9-4FS-_ 40-DIN9-4N-_ _	70 (2.76") 70 (2.76") 90 (3.54")	Ra 0.2 (8 Ra) EP Ra 0.2 (8 Ra) EP Ra 0.8 (32 Ra)	10-DIN9-4BW-_ 10-DIN9-4FS-_ 10-DIN9-4N-_ _	20-DIN9-N-_ _	32	30-PV-6	30-PC-6
10	BW 1/4" FS 1/4" NPT 1/4"	40-DIN10-4BW-_ 40-DIN10-4FS-_ 40-DIN10-4N-_ _	70 (2.76") 70 (2.76") 90 (3.54")	Ra 0.2 (8 Ra) EP Ra 0.2 (8 Ra) EP Ra 0.8 (32 Ra)	10-DIN10-4BW-_ 10-DIN10-4FS-_ 10-DIN10-4N-_ _	20-DIN10-N-_ _	32	30-PV-6	30-PC-6
11	BW 1/4" FS 1/4" NPT 1/4"	40-DIN11-4BW-_ 40-DIN11-4FS-_ 40-DIN11-4N-_ _	67 (2.46") 67 (2.46") 87 (3.42")	Ra 0.2 (8 Ra) EP Ra 0.2 (8 Ra) EP Ra 0.8 (32 Ra)	10-DIN11-4BW-_ 10-DIN11-4FS-_ 10-DIN11-4N-_ _	20-DIN11-N-_ _	22	30-PV-7	30-PV-7
13	BW 1/4" FS 1/4" NPT 1/4"	40-DIN13-4BW-_ 40-DIN13-4FS-_ 40-DIN13-4N-_ _	68 (2.68") 68 (2.68") 88 (3.46")	Ra 0.2 (8 Ra) EP Ra 0.2 (8 Ra) EP Ra 0.8 (32 Ra)	10-DIN13-4BW-_ 10-DIN13-4FS-_ 10-DIN13-4N-_ _	20-DIN13-N-_ _	27	30-PV-6	30-PC-6
14	BW 1/4" FS 1/4" NPT 1/4"	40-DIN14-4BW-_ 40-DIN14-4FS-_ 40-DIN14-4N-_ _	67 (2.46") 67 (2.46") 87 (3.42")	Ra 0.2 (8 Ra) EP Ra 0.2 (8 Ra) EP Ra 0.8 (32 Ra)	10-DIN14-4BW-_ 10-DIN14-4FS-_ 10-DIN14-4N-_ _	20-DIN14-N-_ _	27	30-PV-7	30-PC-7



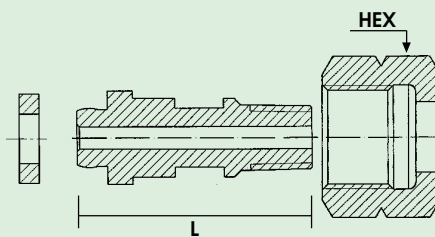
## BUTT WELD



## FACE SEAL



## NPT



DIN 477 Ref. Number	End Connection	Ref. Number Adaptor Blank Plug/Cap	Length (L) mm(Inch)	HEX Blank Plug / Nut in mm	Internal Surface Finish <sup>1°)</sup> µm (µ inch)	Nipple Available Material				
						S	V	N	H	B
1	FS 1/4" NPT 1/4" Blank Plug	60-DIN1-4FS-_ 60-DIN1-4N-_ 50-DIN1-BP-_ _	60 (2.36") 60 (2.36") 38 (1.5")	30	Ra 0.2 (8 Ra) EP Ra 0.8 (32 Ra) —	•	x	x	x	x
						•	x	x	x	•
						•	o	x	x	•
5	FS 1/4" NPT 1/4" Blank Plug	60-DIN5-4FS-_ 60-DIN5-4N-_ 50-DIN5-BP-_ _	57 (2.24") 57 (2.24") 38 (1.5")	32	Ra 0.2 (8 Ra) EP Ra 0.8 (32 Ra) —	•	x	x	x	x
						•	x	x	x	•
						•	o	x	x	•
6	FS 1/4" NPT 1/4" Blank Plug	60-DIN6-4FS-_ 60-DIN6-4N-_ 50-DIN6-BP-_ _	60 (2.36") 60 (2.36") 38 (1.5")	30	Ra 0.2 (8 Ra) EP Ra 0.8 (32 Ra) —	•	x	x	x	x
						•	x	x	x	•
						•	o	x	x	•
7	FS 1/4" NPT 1/4" Blank Plug	60-DIN7-4FS-_ 60-DIN7-4N-_ 50-DIN7-BP-_ _	60 (2.36") 60 (2.36") 38 (1.5")	30	Ra 0.2 (8 Ra) EP Ra 0.8 (32 Ra) —	•	x	x	x	x
						•	x	x	x	•
						•	o	x	x	•
8	FS 1/4" NPT 1/4" Blank Plug	60-DIN8-4FS-_ 60-DIN8-4N-_ 50-DIN8-BP-_ _	57 (2.24") 57 (2.24") 38 (1.5")	32	Ra 0.2 (8 Ra) EP Ra 0.8 (32 Ra) —	•	x	x	x	x
						•	x	x	x	•
						•	o	x	x	•
9	FS 1/4" NPT 1/4" Blank Plug	60-DIN9-4FS-_ 60-DIN9-4N-_ 50-DIN9-BP-_ _	60 (2.36") 60 (2.36") 38 (1.5")	32	Ra 0.2 (8 Ra) EP Ra 0.8 (32 Ra) —	•	x	x	x	x
						•	x	x	x	•
						•	o	x	x	•
10	FS 1/4" NPT 1/4" Blank Plug	60-DIN10-4FS-_ 60-DIN10-4N-_ 50-DIN10-BP-_ _	60 (2.36") 60 (2.36") 38 (1.5")	32	Ra 0.2 (8 Ra) EP Ra 0.8 (32 Ra) —	•	x	x	x	x
						•	x	x	x	•
						•	o	x	x	•
11	FS 1/4" NPT 1/4" Blank Plug	60-DIN11-4FS-_ 60-DIN11-4N-_ 50-DIN11-BP-_ _	57 (2.24") 57 (2.24") 38 (1.5")	22	Ra 0.2 (8 Ra) EP Ra 0.8 (32 Ra) —	•	x	x	x	x
						•	x	x	x	•
						•	o	x	x	•
13	FS 1/4" NPT 1/4" Blank Plug	60-DIN13-4FS-_ 60-DIN13-4N-_ 50-DIN13-BP-_ _	58 (2.27") 58 (2.27") 38 (1.5")	27	Ra 0.2 (8 Ra) EP Ra 0.8 (32 Ra) —	•	x	x	x	x
						•	x	x	x	•
						•	o	x	x	•
14	FS 1/4" NPT 1/4" Blank Plug	60-DIN14-4FS-_ 60-DIN14-4N-_ 50-DIN14-BP-_ _	57 (2.24") 57 (2.24") 38 (1.5")	27	Ra 0.2 (8 Ra) EP Ra 0.8 (32 Ra) —	•	x	x	x	x
						•	x	x	x	•
						•	o	x	x	•

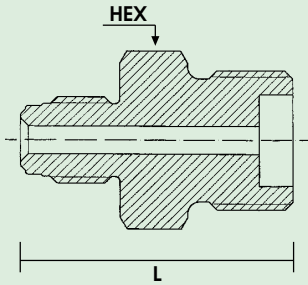
• = available

o = on request

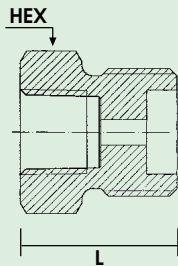
x = not available

<sup>1°)</sup> = not suitable for brass

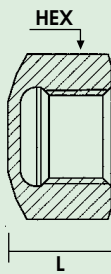
**ADAPTORS  
FACE SEAL**



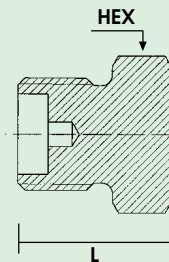
**ADAPTORS  
NPT**



**CONNECTORS  
BLANK CAPS**



**CONNECTORS  
BLANK PLUGS**



DIN 477 Ref. Number	End Connection	Ref. Number Outlet Seal Cap	Length (L) mm(inch)	HEX Outlet seal cap in mm	Fig.	S 303	S 316	B
1	Outlet Cap	70-DIN1-OC_	14.4 (0.57")	30	1	•	o	•
5	Outlet Cap	70-DIN5-OC_	14.8 (0.58")	32	1	•	o	•
6	Outlet Cap	70-DIN6-OC_	14.4 (0.57")	30	1	•	o	•
7	Outlet Cap	70-DIN7-OC_	14.4 (0.57")	30	1	•	o	•
8	Outlet Cap	70-DIN8-OC_	14.8 (0.58")	32	1	•	o	•
9	Outlet Cap	70-DIN9-OC_	14.4 (0.57")	32	1	•	o	•
10	Outlet Cap	70-DIN10-OC_	14.4 (0.57")	32	1	•	o	•
11	Outlet Cap	70-DIN11-OC_	14.4 (0.57")	22	1	•	o	•
13	Outlet Cap	70-DIN13-OC_	14.4 (0.57")	27	2	•	o	•
14	Outlet Cap	70-DIN14-OC_	14.4 (0.57")	27	1	•	o	•

• = available  
o = on request  
x = not available

**CYLINDER  
OUTLET SEAL CAPS**

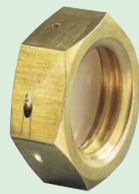
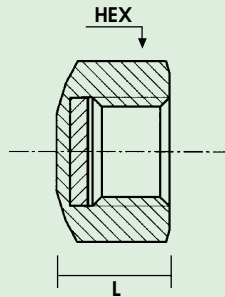


Fig. 1

**CYLINDER  
OUTLET SEAL PLUGS**

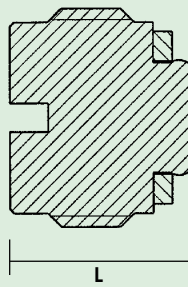
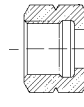
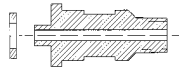
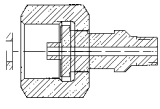


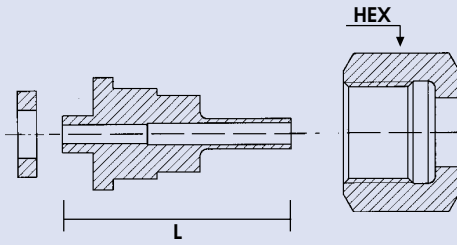
Fig. 2



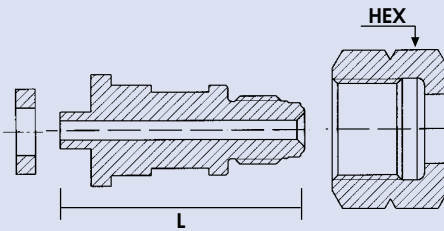
BS 341 Ref. Number	Ref. Number Nipple, Nut, Gasket	Length (L)	Internal Surface Finish 1° µm (µ inch)	Ref. Number Nipple	Ref. Number Nut/Plug	HEX Nut/Plug in mm	Ref. Number Gasket (Material)	Ref. Number Gasket (Material)
							PVDF	PCTFE
2	40-BS2-4BW-_ 40-BS2-4FS-_ 40-BS2-4N-__	3" 3" 3-1/4"	Ra 0.2 (8 Ra) EP Ra 0.2 (8 Ra) EP Ra 0.8 (32 Ra)	10-BS2-4BW-_ 10-BS2-4FS-_ 10-BS2-4N-__	20-BS2-P-__	24	Metal to Metal sealing	Metal to Metal sealing
3	40-BS3-4BW-_ 40-BS3-4FS-_ 40-BS3-4N-__	3" 3" 3-1/4"	Ra 0.2 (8 Ra) EP Ra 0.2 (8 Ra) EP Ra 0.8 (32 Ra)	10-BS3-4BW-_ 10-BS3-4FS-_ 10-BS3-4N-__	20-BS3-P-__	24	Metal to Metal sealing	Metal to Metal sealing
4	40-BS4-4BW-_ 40-BS4-4FS-_ 40-BS4-4N-__	3" 3" 3-1/4"	Ra 0.2 (8 Ra) EP Ra 0.2 (8 Ra) EP Ra 0.8 (32 Ra)	10-BS4-4BW-_ 10-BS4-4FS-_ 10-BS4-4N-__	20-BS4-P-__	24	Metal to Metal sealing	Metal to Metal sealing
6	40-BS6-4BW-_ 40-BS6-4FS-_ 40-BS6-4N-__	3-1/4" 3-1/4" 3-1/2"	Ra 0.2 (8 Ra) EP Ra 0.2 (8 Ra) EP Ra 0.8 (32 Ra)	10-BS6-4BW-_ 10-BS6-4FS-_ 10-BS6-4N-__	20-BS6-N-__	32	30-PV-8	30-PC-8
7	40-BS7-4BW-_ 40-BS7-4FS-_ 40-BS7-4N-__	3-1/4" 3-1/4" 3-1/2"	Ra 0.2 (8 Ra) EP Ra 0.2 (8 Ra) EP Ra 0.8 (32 Ra)	10-BS7-4BW-_ 10-BS7-4FS-_ 10-BS7-4N-__	20-BS7-N-__	32	30-PV-8	30-PC-8
8	40-BS8-4BW-_ 40-BS8-4FS-_ 40-BS8-4N-__	2-1/2" 2-1/2" 2-3/4"	Ra 0.2 (8 Ra) EP Ra 0.2 (8 Ra) EP Ra 0.8 (32 Ra)	10-BS8-4BW-_ 10-BS8-4FS-_ 10-BS8-4N-__	20-BS8-N-__	28	30-PV-9	30-PC-9
10	40-BS10-4BW-_ 40-BS10-4FS-_ 40-BS10-4N-__	3-3/8" 3-3/8" 3-5/8"	Ra 0.2 (8 Ra) EP Ra 0.2 (8 Ra) EP Ra 0.8 (32 Ra)	10-BS10-4BW-_ 10-BS10-4FS-_ 10-BS10-4N-__	20-BS10-N-__	28	30-PV-6	30-PC-6
11	40-BS11-4BW-_ 40-BS11-4FS-_ 40-BS11-4N-__	3-3/8" 3-3/8" 3-5/8"	Ra 0.2 (8 Ra) EP Ra 0.2 (8 Ra) EP Ra 0.8 (32 Ra)	10-BS11-4BW-_ 10-BS11-4FS-_ 10-BS11-4N-__	20-BS11-N-__	28	30-PV-6	30-PV-6
13	40-BS13-4BW-_ 40-BS13-4FS-_ 40-BS13-4N-__	3-3/8" 3-3/8" 3-5/8"	Ra 0.2 (8 Ra) EP Ra 0.2 (8 Ra) EP Ra 0.8 (32 Ra)	10-BS13-4BW-_ 10-BS13-4FS-_ 10-BS13-4N-__	20-BS13-N-__	24	30-PV10	30-PC-10
14	40-BS14-4BW-_ 40-BS14-4FS-_ 40-BS14-4N-__	2-5/8" 2-5/8" 2-7/8"	Ra 0.2 (8 Ra) EP Ra 0.2 (8 Ra) EP Ra 0.8 (32 Ra)	10-BS14-4BW-_ 10-BS14-4FS-_ 10-BS14-4N-__	20-BS14-N-__	22	30-PV11	30-PC-11
15	40-BS15-4BW-_ 40-BS15-4FS-_ 40-BS15-4N-__	2-5/8" 2-5/8" 2-7/8"	Ra 0.2 (8 Ra) EP Ra 0.2 (8 Ra) EP Ra 0.8 (32 Ra)	10-BS15-4BW-_ 10-BS15-4FS-_ 10-BS15-4N-__	20-BS15-N-__	22	30-PV11	30-PC-11
17	40-BS17-4BW-_ 40-BS17-4FS-_ 40-BS17-4N-__	2-1/2" 2-1/2" 2-3/4"	Ra 0.2 (8 Ra) EP Ra 0.2 (8 Ra) EP Ra 0.8 (32 Ra)	10-BS17-4BW-_ 10-BS17-4FS-_ 10-BS17-4N-__	20-BS17-N-__	19	30-PV12	30-PC-12



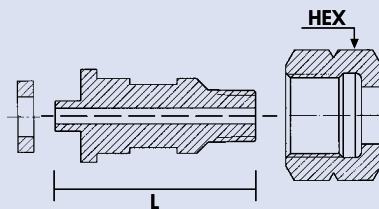
**BUTT WELD**



**FACE SEAL**



**NPT**



S V N H B

○ • X X X  
○ • X X X  
• ○ X X •

○ • X X X  
○ • X X X  
• ○ X X •

○ • X X X  
○ • X X X  
• ○ X X •

○ • X X X  
○ • X X X  
• ○ X X •

○ • X X X  
○ • X X X  
• ○ X X •

○ • X X X  
○ • X X X  
• ○ X X •

○ • X X X  
○ • X X X  
• ○ X X •

○ • X X X  
○ • X X X  
• ○ X X •

○ • X X X  
○ • X X X  
• ○ X X •

○ • ○ ○ X  
○ • ○ ○ X  
• ○ ○ ○ •

○ • X X X  
○ • X X X  
• ○ X X •

○ • X X X  
○ • X X X  
• ○ X X •

BS 341 Ref. Number	End Connection	Ref. Number Adaptor Blank Plug/Cap	Length (L)	HEX Blank Plug/Nut in mm	Internal Surface Finish 1°) µm (µ inch)	Nipple Available Material				
						S	V	N	H	B
2	FS 1/4" NPT 1/4" Blank Cap	60-BS2-4FS-__	3-3/8"	24	Ra 0.2 (8 Ra) EP	•	o	x	x	x
		60-BS2-4N-__	3-1/8"		Ra 0.8 (32 Ra)	•	o	x	x	x
		50-BS2-BC-__	1-1/2"		—	•	x	x	x	•
3	FS 1/4" NPT 1/4" Blank Cap	60-BS3-4FS-__	3-3/8"	24	Ra 0.2 (8 Ra) EP	•	o	x	x	x
		60-BS3-4N-__	3-1/8"		Ra 0.8 (32 Ra)	•	o	x	x	x
		50-BS3-BC-__	1-1/2"		—	•	x	x	x	•
4	FS 1/4" NPT 1/4" Blank Cap	60-BS4-4FS-__	3-3/8"	24	Ra 0.2 (8 Ra) EP	•	o	x	x	x
		60-BS4-4N-__	3-1/8"		Ra 0.8 (32 Ra)	•	o	x	x	x
		50-BS4-BC-__	1-1/2"		—	•	x	x	x	•
6	FS 1/4" NPT 1/4" Blank Plug	60-BS6-4FS-__	3-1/4"	31	Ra 0.2 (8 Ra) EP	•	o	o	o	x
		60-BS6-4N-__	3"		Ra 0.8 (32 Ra)	•	o	o	o	x
		50-BS6-BP-__	1-1/2"		—	•	x	o	o	•
7	FS 1/4" NPT 1/4" Blank Plug	60-BS7-4FS-__	3-1/4"	31	Ra 0.2 (8 Ra) EP	•	o	x	x	x
		60-BS7-4N-__	3"		Ra 0.8 (32 Ra)	•	o	x	x	x
		50-BS7-BP-__	1-1/2"		—	•	x	x	x	•
8	FS 1/4" NPT 1/4" Blank Plug	60-BS8-4FS-__	2-3/8"	28	Ra 0.2 (8 Ra) EP	•	o	x	x	x
		60-BS8-4N-__	2-1/8"		Ra 0.8 (32 Ra)	•	o	x	x	x
		50-BS8-BP-__	1-1/2"		—	•	x	x	x	•
10	FS 1/4" NPT 1/4" Blank Plug	60-BS10-4FS-__	2-3/8"	28	Ra 0.2 (8 Ra) EP	•	o	x	x	x
		60-BS10-4N-__	2-1/8"		Ra 0.8 (32 Ra)	•	o	x	x	x
		50-BS10-BP-__	1-1/2"		—	•	x	x	x	•
11	FS 1/4" NPT 1/4" Blank Plug	60-BS11-4FS-__	2-3/8"	28	Ra 0.2 (8 Ra) EP	•	o	x	x	x
		60-BS11-4N-__	2-1/8"		Ra 0.8 (32 Ra)	•	o	x	x	x
		50-BS11-BP-__	1-1/2"		—	•	x	x	x	•
13	FS 1/4" NPT 1/4" Blank Plug	60-BS13-4FS-__	3-1/4"	24	Ra 0.2 (8 Ra) EP	•	o	x	x	x
		60-BS13-4N-__	3"		Ra 0.8 (32 Ra)	•	o	x	x	x
		50-BS13-BP-__	1-1/2"		—	•	x	x	x	•
14	FS 1/4" NPT 1/4" Blank Plug	60-BS14-4FS-__	3-1/4"	22	Ra 0.2 (8 Ra) EP	•	o	o	o	x
		60-BS14-4N-__	3"		Ra 0.8 (32 Ra)	•	o	o	o	x
		50-BS14-BP-__	1-1/2"		—	•	x	o	o	•
15	FS 1/4" NPT 1/4" Blank Plug	60-BS15-4FS-__	3-1/4"	22	Ra 0.2 (8 Ra) EP	•	o	x	x	x
		60-BS15-4N-__	3"		Ra 0.8 (32 Ra)	•	o	x	x	x
		50-BS15-BP-__	1-1/2"		—	•	x	x	x	•
17	FS 1/4" NPT 1/4" Blank Plug	60-BS17-4FS-__	3-1/4"	19	Ra 0.2 (8 Ra) EP	•	o	x	x	x
		60-BS17-4N-__	3"		Ra 0.8 (32 Ra)	•	o	x	x	x
		50-BS17-BP-__	1-1/2"		—	•	x	x	x	•

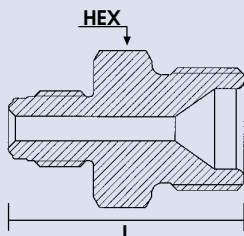
• = available

o = on request

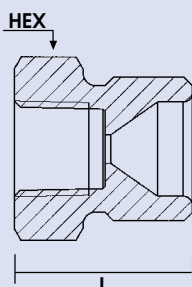
x = not available

1° = not suitable for brass

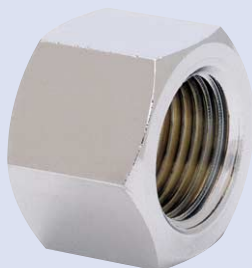
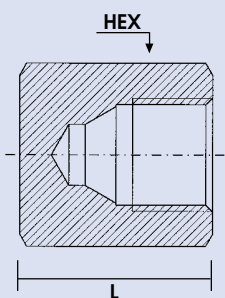
**ADAPTORS  
FACE SEAL**



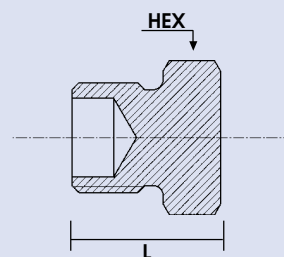
**ADAPTORS  
NPT**



**CONNECTORS  
BLANK CAPS**



**CONNECTORS  
BLANK PLUGS**



BS 341 Ref. Number	End Connection	Ref. Number Outlet Seal Cap (gasket incl.)	Length (L)	Fig.	SS 303	SS 316 L	B
2	Outlet Plug	70-BS2-OP_	1.1"	2	•	x	•
3	Outlet Cap	70-BS3-OP_	1.1"	2	•	x	•
4	Outlet Plug	70-BS4-OP_	1.1"	2	•	x	•
6	Outlet Cap	70-BS6-OC_	0.57"	1	•	x	•
7	Outlet Cap	70-BS7-OC_	0.57"	1	•	x	•
8	Outlet Plug	70-BS8-OC_	0.57"	1	•	x	•
10	Outlet Cap	70-BS10-OC_	0.57"	1	•	x	x
11	Outlet Cap	70-BS11-OC_	0.57"	1	•	x	•
13	Outlet Cap	70-BS13-OC_	0.57"	1	•	x	•
14	Outlet Cap	70-BS14-OC_	0.57"	1	•	x	•
15	Outlet Cap	70-BS15-OC_	0.57"	1	•	x	•
17	Outlet Cap	70-BS17-OC_	0.57"	1	•	x	•

• = available  
o = on request  
x = not available

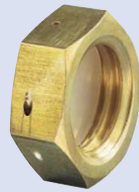
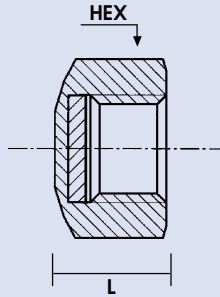
**CYLINDER VALVES  
OUTLET SEAL CAPS**

Fig. 1

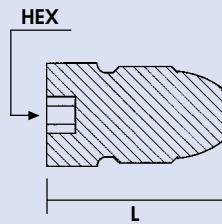
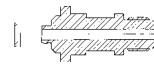
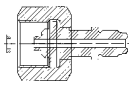
**CYLINDER VALVES  
OUTLET SEAL PLUGS**

Fig. 2



**POLYMERIC SEALING**

NF E29/650 Ref. Letter	END Connection	Ref. Number <small>Nut, Nipple, Gasket</small>	Length (L) <small>mm(Inch)</small>	Ref. Number <small>Nut/Plug</small>	HEX Nut/Plug <small>in mm</small>	Internal Surface <small>Finish (1°) µm (µ inch)</small>	Ref. Number <small>Nipple</small>	Ref. Number <small>Gasket (Material)</small>	Ref. Number <small>Gasket (Material)</small>	
								EPDM	FPM	
C	BW 1/4"	40-NFC-4BW-__	57.15 (2-1/2")	20-NFC-N-__	27	Ra 0.2 (8 Ra) EP	10-NFC-4BW-__	30-EP-1	30-FP-1	
	FS 1/4"	40-NFC-4FS-__	89 (3-1/2")			Ra 0.2 (8 Ra) EP				10-NFC-4FS-__
	NPT 1/4"	40-NFC-4N-__	89 (3-1/2")			Ra 0.8 (32 Ra)				10-NFC-4N-__
E	BW 1/4"	40-NFE-4BW-__	57.15 (2-1/2")	20-NFC-N-__	27	Ra 0.2 (8 Ra) EP	10-NFE-4BW-__	30-EP-1	30-FP-1	
	FS 1/4"	40-NFE-4FS-__	89 (3-1/2")			Ra 0.2 (8 Ra) EP				10-NFE-4FS-__
	NPT 1/4"	40-NFE-4N-__	89 (3-1/2")			Ra 0.8 (32 Ra)				10-NFE-4N-__
F	BW 1/4"	40-NFF-4BW-__	76.3 (3")	20-NFF-P-__	27	Ra 0.2 (8 Ra) EP	10-NFF-4BW-__	30-EP-1	30-FP-1	
	FS 1/4"	40-NFF-4FS-__	89 (3-1/2")			Ra 0.2 (8 Ra) EP				10-NFF-4FS-__
	NPT 1/4"	40-NFF-4N-__	89 (3-1/2")			Ra 0.8 (32 Ra)				10-NFF-4N-__
G	BW 1/4"	40-NFG-4BW-__	76.3 (3")	20-NFG-P-__	27	Ra 0.2 (8 Ra) EP	10-NFG-4BW-__	30-EP-1	30-FP-1	
	FS 1/4"	40-NFG-4FS-__	89 (3-1/2")			Ra 0.2 (8 Ra) EP				10-NFG-4FS-__
	NPT 1/4"	40-NFG-4N-__	89 (3-1/2")			Ra 0.8 (32 Ra)				10-NFG-4N-__
J	BW 1/4"	40-NFJ-4BW-__	57.15 (2-1/2")	20-NFJ-N-__	32	Ra 0.2 (8 Ra) EP	10-NFJ-4BW-__			
	FS 1/4"	40-NFJ-4FS-__	76.3 (3")			Ra 0.2 (8 Ra) EP				10-NFJ-4FS-__
	NPT 1/4"	40-NFJ-4N-__	76.3 (3")			Ra 0.8 (32 Ra)				10-NFJ-4N-__
K	BW 1/4"	40-NFK-4BW-__	60.3 (2-5/8")	20-NFK-N-__	32	Ra 0.2 (8 Ra) EP	10-NFK-4BW-__	30-EP-1	30-FP-1	
	FS 1/4"	40-NFK-4FS-__	76.3 (3")			Ra 0.2 (8 Ra) EP				10-NFK-4FS-__
	NPT 1/4"	40-NFK-4N-__	76.3 (3")			Ra 0.8 (32 Ra)				10-NFK-4N-__
P	BW 1/4"	40-NFP-4BW-__	60.3 (2-5/8")	20-NFP-N-__	32	Ra 0.2 (8 Ra) EP	10-NFP-4BW-__	30-EP-1	30-FP-1	
	FS 1/4"	40-NFP-4FS-__	76.3 (3")			Ra 0.2 (8 Ra) EP				10-NFP-4FS-__
	NPT 1/4"	40-NFP-4N-__	76.3 (3")			Ra 0.8 (32 Ra)				10-NFP-4N-__

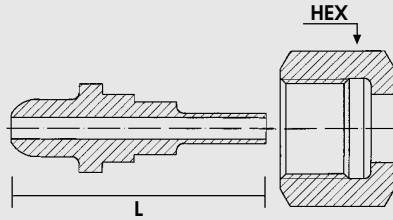
**METAL SEALING**

NF E29/650 Ref. Letter	END Connection	Ref. Number <small>Nut, Nipple, Gasket</small>	Length (L) <small>mm(Inch)</small>	Ref. Number <small>Nut/Plug</small>	HEX Nut/Plug <small>in mm</small>	Internal Surface <small>Finish (1°) µm (µ inch)</small>	PURETEC Number <small>Nipple</small>	
C	BW 1/4"	41-NFC-4BW-__	57.15 (2-1/2")	21-NFC-N-__	27	Ra 0.2 (8 Ra) EP	11-NFC-4BW-__	
	FS 1/4"	41-NFC-4FS-__	89 (3-1/2")			Ra 0.2 (8 Ra) EP		11-NFC-4FS-__
	NPT 1/4"	41-NFC-4N-__	89 (3-1/2")			Ra 0.8 (32 Ra)		11-NFC-4N-__
E	BW 1/4"	41-NFE-4BW-__	57.15 (2-1/2")	21-NFC-N-__	27	Ra 0.2 (8 Ra) EP	11-NFE-4BW-__	
	FS 1/4"	41-NFE-4FS-__	89 (3-1/2")			Ra 0.2 (8 Ra) EP		11-NFE-4FS-__
	NPT 1/4"	41-NFE-4N-__	89 (3-1/2")			Ra 0.8 (32 Ra)		11-NFE-4N-__
F	BW 1/4"	41-NFF-4BW-__	76.3 (3")	21-NFF-P-__	27	Ra 0.2 (8 Ra) EP	11-NFF-4BW-__	
	FS 1/4"	41-NFF-4FS-__	89 (3-1/2")			Ra 0.2 (8 Ra) EP		11-NFF-4FS-__
	NPT 1/4"	41-NFF-4N-__	89 (3-1/2")			Ra 0.8 (32 Ra)		11-NFF-4N-__
G	BW 1/4"	41-NFG-4BW-__	76.3 (3")	21-NFG-P-__	27	Ra 0.2 (8 Ra) EP	11-NFG-4BW-__	
	FS 1/4"	41-NFG-4FS-__	89 (3-1/2")			Ra 0.2 (8 Ra) EP		11-NFG-4FS-__
	NPT 1/4"	41-NFG-4N-__	89 (3-1/2")			Ra 0.8 (32 Ra)		11-NFG-4N-__

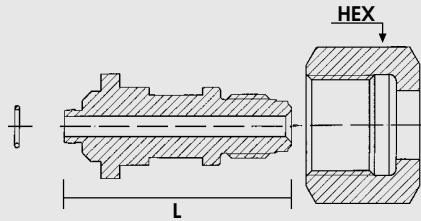


Ref. Number	Ref. Number	S	V	N	H	B
Gasket (Material)	Gasket (Material)					
CR	PVDF					
30-CR-1		○	•	X	X	X
		○	•	X	X	X
		•	○	X	X	•
30-CR-1		○	•	X	X	X
		○	•	X	X	X
		•	○	X	X	•
30-CR-1		○	•	X	X	X
		○	•	X	X	X
		•	○	X	X	•
30-CR-1		○	•	X	X	X
		○	•	X	X	X
		•	○	X	X	•
30-CR-1	30-PV-13	○	•	○	○	X
		○	•	○	○	X
		•	○	○	○	•
30-CR-1		○	•	○	○	X
		○	•	○	○	X
		•	○	○	○	•
30-CR-1		○	•	○	○	X
		○	•	○	○	X
		•	○	○	○	•

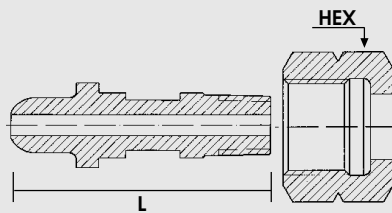
**BUTT WELD**



**FACE SEAL**



**NPT**

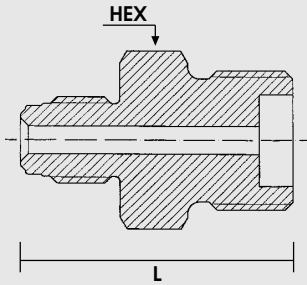


NF E29/650 Ref. Letter	End Connection	Puretec Ref. Number Adaptor Blank Plug/Cap	Length (L) mm (inch)	HEX Blank Plug / Cap in mm	Internal Surface Finish 1°) µm (µ inch)	Nipple Available Material				
						S	V	N	H	B
C	FS 1/4" NPT 1/4" Blank Plug	60-NFC-4FS-__	60.3 (2-5/8")	27	Ra 0.2 (8 Ra) EP	•	o	x	x	x
		60-NFC-4N-__	60.3 (2-5/8")		Ra 0.8 (32 Ra)	•	o	x	x	x
		50-NFC-BP-__	38 (1-1/2")		—	•	x	x	x	•
E	FS 1/4" NPT 1/4" Blank Plug	60-NFE-4FS-__	60.3 (2-5/8")	27	Ra 0.2 (8 Ra) EP	•	o	x	x	x
		60-NFE-4N-__	60.3 (2-5/8")		Ra 0.8 (32 Ra)	•	o	x	x	x
		50-NFE-BP-__	38 (1-1/2")		—	•	x	x	x	•
F	FS 1/4" NPT 1/4" Blank Cap	60-NFF-4FS-__	60.3 (2-5/8")	27	Ra 0.2 (8 Ra) EP	•	o	x	x	x
		60-NFF-4N-__	60.3 (2-5/8")		Ra 0.8 (32 Ra)	•	o	x	x	x
		50-NFF-BC-__	31.8 (1-1/4")		—	•	x	x	x	•
G	FS 1/4" NPT 1/4" Blank Cap	60-NFG-4FS-__	60.3 (2-5/8")	27	Ra 0.2 (8 Ra) EP	•	o	x	x	x
		60-NFG-4N-__	60.3 (2-5/8")		Ra 0.8 (32 Ra)	•	o	x	x	x
		50-NFG-BC-__	31.8 (1-1/4")		—	•	x	x	x	•
J	FS 1/4" NPT 1/4" Blank Plug	60-NFJ-4FS-__	60.3 (2-5/8")	32	Ra 0.2 (8 Ra) EP	•	o	o	o	x
		60-NFJ-4N-__	60.3 (2-5/8")		Ra 0.8 (32 Ra)	•	o	o	o	x
		50-NFJ-BP-__	38 (1-1/2")		—	•	x	o	o	•
K	FS 1/4" NPT 1/4" Blank Plug	60-NFK-4FS-__	76.3 (3")	32	Ra 0.2 (8 Ra) EP	•	o	o	o	x
		60-NFK-4N-__	76.3 (3")		Ra 0.8 (32 Ra)	•	o	o	o	x
		50-NFK-BP-__	44.5 (1-3/4")		—	•	x	o	o	•
P	FS 1/4" NPT 1/4" Blank Plug	60-NFP-4FS-__	76.3 (3")	32	Ra 0.2 (8 Ra) EP	•	o	o	o	x
		60-NFP-4N-__	76.3 (3")		Ra 0.8 (32 Ra)	•	o	o	o	x
		50-NFP-BP-__	44.5 (1-3/4")		—	•	x	o	o	•

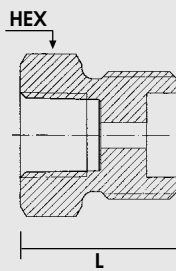
• = available  
o = on request  
x = not available  
1°) = not suitable for brass



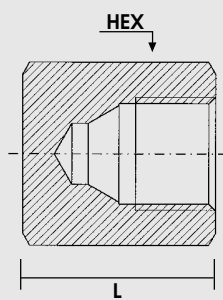
**ADAPTORS  
FACE SEAL**



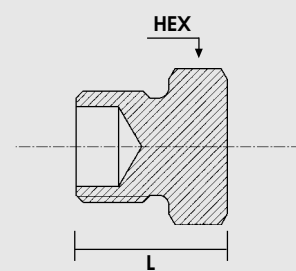
**ADAPTORS  
NPT**



**CONNECTORS  
BLANK CAPS**



**CONNECTORS  
BLANK PLUGS**



NF E29/650 Ref. Letter	End Connection	Ref. Number Outlet Seal Cap	Length (L) mm(Inch)	HEX Outlet seal cap in mm	Fig.	S303	S316	B
C	Outlet Cap	30-NFC-OC_	38 (1.1/2")	30	1 - 2	•	o	•
E	Outlet Cap	30-NFE-OC_	38 (1.1/2")	32	1 - 2	•	o	•
F	Outlet Plug	30-NFF-OP_	31.8 (1-1/4")	30	3 - 4	•	o	•
G	Outlet Plug	30-NFG-OP_	31.8 (1-1/4")	30	3 - 4	•	o	•
J	Outlet Cap	30-NFJ-OC_	14.8 (0.58")	32	1	•	o	x
K	Outlet Cap	30-NFK-OC_	31.8 (1-1/4")	32	2	•	o	x
P	Outlet Cap	30-NFP-OC_	31.8 (1-1/4")	27	2	•	o	x

• = available  
o = on request  
x = not available

**CYLINDER VALVES  
OUTLET SEAL CAPS**

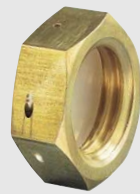
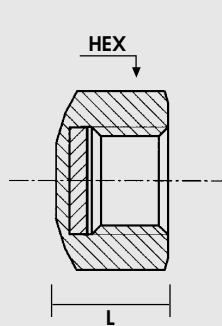


Fig. 1

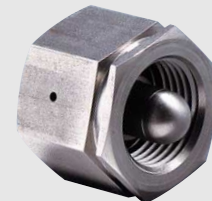
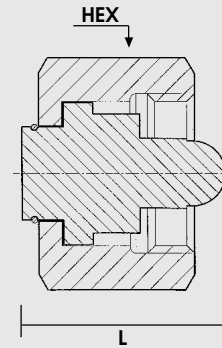


Fig. 2

**CYLINDER VALVES  
OUTLET SEAL PLUGS**

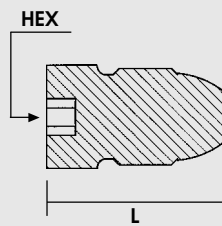


Fig. 3

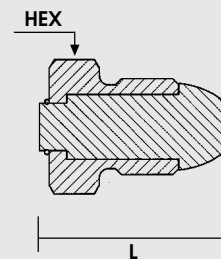
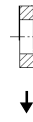
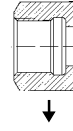
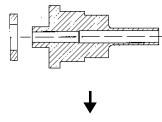
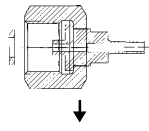
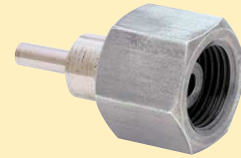
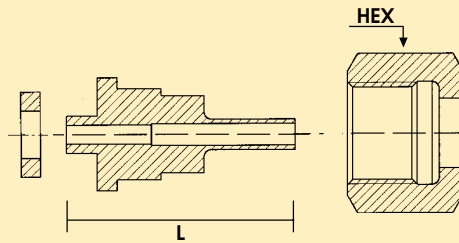


Fig. 4

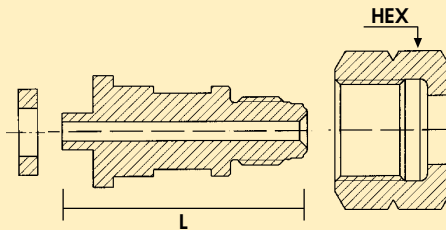


JIS B 8246 Ref. Number	End Connection	Ref. Number Nipple, Nut, Gasket	Length (L)	Internal Surface Finish 1° µm (µ inch)	Ref. Number Nipple	Ref. Number Nut/Plug	HEX Nut/Plug	Ref. Number Gasket (Material)	Ref. Number Gasket (Material)
								PVDF	PCTFE
22R	BW 1/4" FS 1/4" NPT 1/4"	40-JIS22R-4BW-_ 40-JIS22R-4FS-_ 40-JIS22R-4N-_ _	2-1/8" 2-1/8" 3"	Ra 0.2 (8 Ra) EP Ra 0.2 (8 Ra) EP Ra 0.8 (32 Ra)	10-JIS22R-4BW-_ 10-JIS22R-4FS-_ 10-JIS22R-4N-_ _	20-JIS22R-N-_ _	1.14"	30-PV-14	30-PC-14
22L	BW 1/4" FS 1/4" NPT 1/4"	40-JIS22L-4BW-_ 40-JIS22L-4FS-_ 40-JIS22L-4N-_ _	2-1/8" 2-1/8" 3"	Ra 0.2 (8 Ra) EP Ra 0.2 (8 Ra) EP Ra 0.8 (32 Ra)	10-JIS22L-4BW-_ 10-JIS22L-4FS-_ 10-JIS22L-4N-_ _	20-JIS22L-N-_ _	1.14"	30-PV-14	30-PC-14
23R	BW 1/4" FS 1/4" NPT 1/4"	40-JIS23R-4BW-_ 40-JIS23R-4FS-_ 40-JIS23R-4N-_ _	3" 3" 3-1/2"	Ra 0.2 (8 Ra) EP Ra 0.2 (8 Ra) EP Ra 0.8 (32 Ra)	10-JIS23R-4BW-_ 10-JIS23R-4FS-_ 10-JIS23R-4N-_ _	20-JIS23R-N-_ _	1.1/4"	Metal to Metal sealing	Metal to Metal sealing
23L	BW 1/4" FS 1/4" NPT 1/4"	40-JIS23L-4BW-_ 40-JIS23L-4FS-_ 40-JIS23L-4N-_ _	3" 3" 3-1/2"	Ra 0.2 (8 Ra) EP Ra 0.2 (8 Ra) EP Ra 0.8 (32 Ra)	10-JIS23L-4BW-_ 10-JIS23L-4FS-_ 10-JIS23L-4N-_ _	20-JIS23L-N-_ _	1.1/4"	Metal to Metal sealing	Metal to Metal sealing
26R	BW 1/4" FS 1/4" NPT 1/4"	40-JIS26R-4BW-_ 40-JIS26R-4FS-_ 40-JIS26R-4N-_ _	2-1/8" 2-1/8" 3"	Ra 0.2 (8 Ra) EP Ra 0.2 (8 Ra) EP Ra 0.8 (32 Ra)	10-JIS26R-4BW-_ 10-JIS26R-4FS-_ 10-JIS26R-4N-_ _	20-JIS26R-N-_ _	1.1/4"	30-PV-15	30-PC-15
26L	BW 1/4" FS 1/4" NPT 1/4"	40-JIS26L-4BW-_ 40-JIS26L-4FS-_ 40-JIS26L-4N-_ _	2-1/8" 2-1/8" 3"	Ra 0.2 (8 Ra) EP Ra 0.2 (8 Ra) EP Ra 0.8 (32 Ra)	10-JIS26L-4BW-_ 10-JIS26L-4FS-_ 10-JIS26L-4N-_ _	20-JIS26L-N-_ _	1.1/4"	30-PV-15	30-PC-15

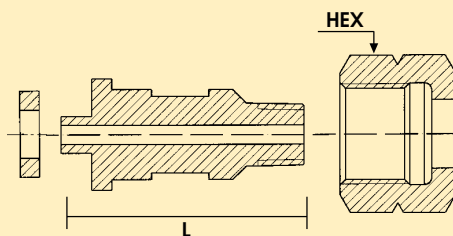
**BUTT WELD**



**FACE SEAL**



**NPT**



S V N H B

○ • X X X  
○ • X X X  
• ○ X X •

○ • X X X  
○ • X X X  
• ○ X X •

○ • X X X  
○ • X X X  
• ○ X X •

○ • X X X  
○ • X X X  
• ○ X X •

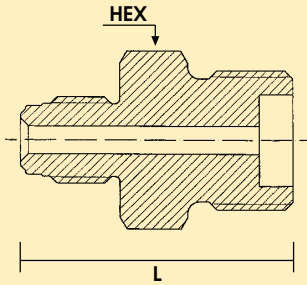
○ • ○ ○ X  
○ • ○ ○ X  
• ○ ○ ○ ○

○ • ○ ○ X  
○ • ○ ○ X  
• ○ ○ ○ •

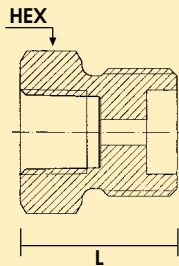
JIS B 8246 Ref.Number	End Connection	Ref. Number Adaptor	Length (L)	HEX Blank Plug/Nut	Internal Surface Finish 1°) µm (µ.inch)	Nipple Available Material				
						S	V	N	H	B
		Blank Plug/Cap								
22R	FS 1/4" NPT 1/4" Blank Plug	60-JIS22R-4FS-__	2-1/4"	1.14"	Ra 0.2 (8 Ra) EP	•	o	x	x	x
		60-JIS22R-4N-__	2"		Ra 0.8 (32 Ra)	•	o	x	x	x
		50-JIS22R-BP-__	1-1/2"		—	•	x	x	x	•
22L	FS 1/4" NPT 1/4" Blank Plug	60-JIS22L-4FS-__	2-1/4"	1.14"	Ra 0.2 (8 Ra) EP	•	o	x	x	x
		60-JIS22L-4N-__	2"		Ra 0.8 (32 Ra)	•	o	x	x	x
		50-JIS22L-BP-__	1-1/2"		—	•	x	x	x	•
23R	FS 1/4" NPT 1/4" Blank Cap	60-JIS23R-4FS-__	2-1/4"	1.1/4"	Ra 0.2 (8 Ra) EP	•	o	x	x	x
		60-JIS23R-4N-__	2"		Ra 0.8 (32 Ra)	•	o	x	x	x
		50-JIS23R-BC-__	1-1/2"		—	•	x	x	x	•
23L	FS 1/4" NPT 1/4" Blank Cap	60-JIS23L-4FS-__	2-1/4"	1.1/4"	Ra 0.2 (8 Ra) EP	•	o	x	x	x
		60-JIS23L-4N-__	2"		Ra 0.8 (32 Ra)	•	o	x	x	x
		50-JIS23L-BC-__	1-1/2"		—	•	x	x	x	•
26R	FS 1/4" NPT 1/4" Blank Plug	60-JIS26R-4FS-__	2-1/8"	1.1/4"	Ra 0.2 (8 Ra) EP	•	o	o	o	x
		60-JIS26R-4N-__	1-7/8"		Ra 0.8 (32 Ra)	•	o	o	o	x
		50-JIS26R-BP-__	1-1/2"		—	•	x	o	o	•
26L	FS 1/4" NPT 1/4" Blank Plug	60-JIS26L-4FS-__	2-1/8"	1.1/4"	Ra 0.2 (8 Ra) EP	•	o	o	o	x
		60-JIS26L-4N-__	1-7/8"		Ra 0.8 (32 Ra)	•	o	o	o	x
		50-JIS26L-BP-__	1-1/2"		—	•	x	o	o	•

• = available  
o = on request  
x = not available  
1° = not suitable for brass

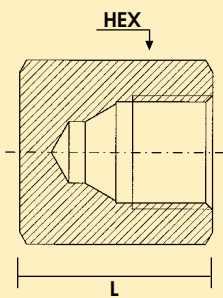
**ADAPTORS  
FACE SEAL**



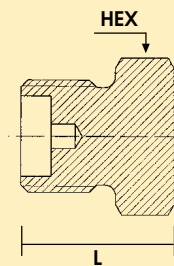
**ADAPTORS  
NPT**



**CONNECTORS  
BLANK CAPS**



**CONNECTORS  
BLANK PLUGS**



JIS B 8246 Ref.Number	End Connection	Ref. Number Outlet Seal Cap	Length (L)	HEX  Outlet seal cap	Fig.	S 303	S 316	B
22R	Outlet Cap	70-JIS22R-OC_	0.57"	1.14"	1	•	o	•
22L	Outlet Cap	70-JIS22L-OC_	0.57"	1.14"	1	•	o	•
23R	Outlet Plug	70-JIS23R-OP_	1-3/4"	1.1/4"	2	•	o	•
23L	Outlet Plug	70-JIS23L-OP_	1-3/4"	1.1/4"	2	•	o	•
26R	Outlet Cap	70-JIS26R-OC_	0.57"	1.1/4"	1	•	o	•
26L	Outlet Cap	70-JIS26L-OC_	0.57"	1.1/4"	1	•	o	•

• = available  
o = on request  
x = not available



**CYLINDER VALVES  
OUTLET SEAL CAPS**

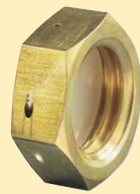
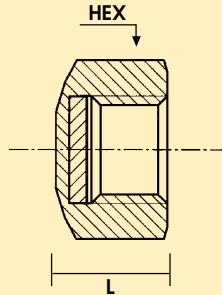


Fig. 1

**CYLINDER VALVES  
OUTLET SEAL PLUGS**

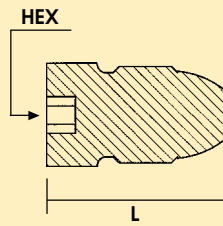


Fig. 2

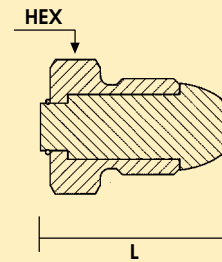
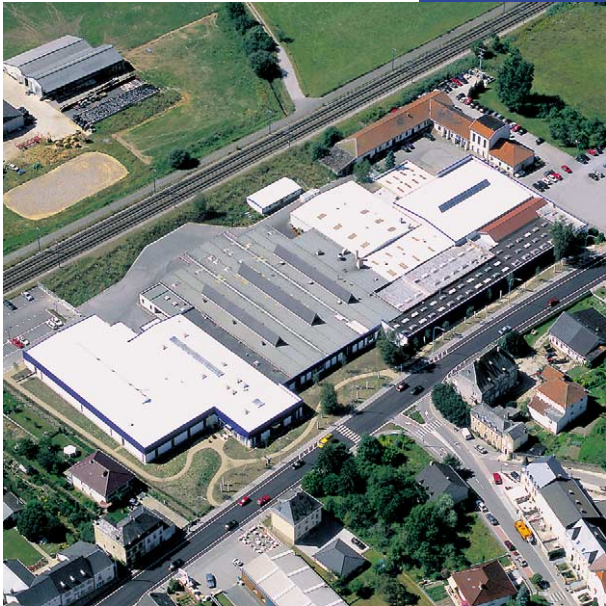


Fig. 3



**INFORMATION:**